

GENERAL NOTES:

- 1. ALL WORK SHALL COMPLY WITH THE TOWN OF NEW CASTLE PUBLIC WORKS MANUAL.
2. LIMITS OF CONSTRUCTION SHALL BE 5' BEYOND GRADING LIMITS, BASE OF FILL SLOPES OR TOP OF CUT SLOPES, AND 20' EITHER SIDE OF THE CENTERLINE OF UTILITY INSTALLATIONS.
3. TRAFFIC CONTROL REQUIREMENTS:
- MAINTAIN ACCESS TO OTHER STRUCTURES AT ALL TIMES.
- PROVIDE SAFETY CONES, FLAG PERSONS, VERTICAL PANELS WITH BEACONS, SIGNAGE AND BARRICADES AS NECESSARY TO PROTECT PUBLIC AND WORK SITE.
4. PRIME COAT NOT REQUIRED UNLESS INDICATED ON DRAWINGS.
5. DILUTED EMULSIFIED ASPHALT OR TACK COAT SHALL CONSIST OF 1 PART EMULSIFIED AND 1 PART WATER.
6. THE FOLLOWING SHALL BE USED WITH EACH BITUMINOUS PAVEMENT:
a. A SKI-TYPE DEVICE AT LEAST 30 FEET IN LENGTH.
b. SHORT SKI OR SHOE.
7. ALL WORK SHALL BE DONE IN STRICT ACCORDANCE WITH APPLICABLE SECTIONS OF THE SITE SUBSOIL STUDY.
8. SPOT ELEVATIONS ALONG CURB/GUTTER ARE TO FLOWLINE UNLESS OTHERWISE NOTED.
9. SOURCE OF MAPPING: EXISTING FIELD TOPO WAS SURVEYED BY SGM INC.
10. THROUGHOUT ALL PHASES OF CONSTRUCTION, UNTIL THE FINAL ACCEPTANCE OF THE PROJECT, THE CONTRACTOR SHALL KEEP THE WORK SITE CLEAN AND FREE FROM RUBBISH AND DEBRIS.
11. BUILDERS WILL ENSURE ADEQUATE VEHICLE ACCESS DURING CONSTRUCTION OF THE PROJECT, INCLUDING PARKING OF COMPANY/PRIVATE VEHICLES SO AS TO MAINTAIN A MINIMUM 8-FOOT WIDE DRIVEWAYS.
12. BUILDERS WILL ALLOW FOR A CLEAR 24 INCH WIDE PATH FOR STRETCHER ACCESS TO PROJECT DRIVEWAYS.
13. PROPER STREET NAME AND HOUSE NUMBERS SHALL BE VISIBLE DURING CONSTRUCTION THROUGH COMPLETION OF THE PROJECT.
14. RAMP AND WING SLOPES SHALL NOT BE STEEPER THAN 12:1; DIMENSIONS SHOWN SHALL BE MODIFIED, AS NECESSARY, TO MEET THIS REQUIREMENT.
15. ALL CONCRETE SHALL BE CLASS B.
16. NORMAL GUTTER FLOW LINE AND PROFILE SHALL BE MAINTAINED THROUGH THE RAMP AREA.
17. IF POSSIBLE, DRAINAGE STRUCTURES SHALL NOT BE PLACED IN LINE WITH RAMPS, LOCATION OF THE RAMP SHALL TAKE PRECEDENCE OVER LOCATION OF THE DRAINAGE STRUCTURE, EXCEPT WHERE EXISTING STRUCTURES ARE BEING UTILIZED IN THE NEW CONSTRUCTION.

SHALLOW UTILITY NOTES:

- 1. EXISTING UTILITY LOCATIONS ARE A COMBINATION OF SURVEYED FIELD LOCATIONS, OBSERVATIONS, AND EXISTING MAPPING. CONTRACTOR SHALL FIELD VERIFY ALL EXISTING UTILITIES PRIOR TO ANY CONSTRUCTION.
2. ALL WORK TO BE DONE IN STRICT COMPLIANCE WITH RESPECTIVE UTILITY COMPANY REQUIREMENTS.
3. SHALLOW UTILITIES SHOWN ON THE PLANS ARE SHOWN AS DESIGN LOCATIONS. FIELD CONDITIONS MAY REQUIRE MINOR UTILITY ADJUSTMENTS.
4. PROVIDE CONDUIT SIZE AND TYPE PER LOCAL UTILITY PROVIDER.
5. PROVIDE CONDUIT STUB A MINIMUM OF 6" ABOVE FINAL GRADE AT LOCATIONS DESIGNATED FOR PEDESTAL INSTALLATION AND CAP.
6. DUCT TAPE EACH UTILITY CONDUIT GROUPING (I.E. TELEPHONE, CABLE, ELEC.) TOGETHER ABOVE GRADE AND LABEL.
7. PROVIDE PULL STRING IN EACH CONDUIT.
8. TRANSITION CONDUIT FROM TYPICAL UTILITY TRENCH SPACING TO PROVIDE SEPARATION FROM VERTICAL APPURTENANCES OF DEEPER UTILITIES.
9. GAS UTILITY WILL INSTALL GAS PIPING.
10. GAS- OWNER PROVIDED TRENCH REQUIREMENTS - XCEL ENERGY; GAS LINE TRENCH SHALL BE EXCLUSIVE TO XCEL ENERGY, AND SHALL BE LOCATED SO THAT GAS MAIN AND SERVICES ARE A MINIMUM OF 5 FEET FROM ALL ELECTRICAL LINES.
11. GAS MAIN SHALL HAVE A MINIMUM OF 36" OF APPROVED BACK-FILL OR COVER.
12. GAS- WIDTH OF TRENCH SHALL NOT BE LESS THAN (10") FOR 2" MAIN INSTALLATION AND (14") FOR 4" MAIN INSTALLATION. WHERE TIE-INS OR CROSSINGS ARE LOCATED BELL-HOLES SHALL BE PROVIDED, SIZE OF WHICH SHALL ALLOW ADEQUATE WORKING SPACE FOR MEN AND EQUIPMENT.
13. GAS- BEDDING MATERIAL SHALL BE ROCK FREE. BEDDING MATERIAL SHALL NOT CONSIST OF ANY FRACTURED ROCK TYPE MATERIAL. ALL BEDDING MATERIAL TO BE PRE-APPROVED BY SOURCEGAS REPRESENTATIVE.
14. GAS- WHEN ROCKY CONDITIONS ARE ENCOUNTERED THE TRENCH BOTTOM SHALL BE CLEAN AND THE GAS MAIN BEDDED A MINIMUM OF 6" BELOW AND 12" ABOVE WITH PRE-APPROVED BEDDING MATERIAL.
15. GAS- PIPELINE TO BE BEDDED AND BACK-FILLED THE SAME DAY AS INSTALLED.
16. GAS- CONTRACTOR/DEVELOPER RESPONSIBLE FOR COMPACTION REQUIREMENTS PER SPECIFICATIONS.
17. GAS- PRIOR TO TRENCHING, A PRE-CONSTRUCTION MEETING WILL BE HELD WITH SOURCEGAS REPRESENTATIVE AND EXCAVATION SUPERVISOR AND/OR SUB-CONTRACTOR SUPERVISOR.
18. ALL SITE CLEANUP AND LANDSCAPING TO BE COMPLETE BY CONTRACTOR/DEVELOPER.
19. IT IS THE RESPONSIBILITY OF THE CONTRACTOR/DEVELOPER TO DISPOSE OF EXCESS MATERIALS OR SPOILS.
20. ELEC- CONTRACTOR TO INSTALL (1) 4" CONDUIT FURNISHED BY XCEL ENERGY; BED CONDUIT WITH 3/4" MINUS MATERIAL, 4" BELOW TO 4" ABOVE CONDUIT. PULL CORD TO BE FURNISHED AND INSTALLED BY CONTRACTOR.
21. CABLE- COMCAST CABLE WILL PROVIDE ANY REQUIRED VAULTS AND PEDESTALS.
22. CABLE- COMCAST REQUESTS CONTRACTOR TO FURNISH 3" DIAMETER, SCHEDULE 40 PVC CONDUIT.
23. CABLE- CONTRACTOR TO INSTALL CONDUIT; BED CONDUIT WITH 3/4" MINUS MATERIAL, 4" BELOW TO 4" ABOVE CONDUIT; STUB CONDUIT ABOVE GROUND AT PEDESTAL LOCATIONS; PULL CORD TO BE FURNISHED AND INSTALLED BY CONTRACTOR.
24. TELE- CENTURYLINK REQUESTS CONTRACTOR TO SUPPLY 4" SCHEDULE 40 PVC CONDUIT.
25. TELE- CENTURYLINK REQUESTS INSTALLATION OF SWEEPS TO HAVE A MINIMUM 9 FOOT RADIUS.
26. TELE- CENTURYLINK REQUESTS SWEEPS TO BE GLUED IN PLACE, EXTEND AT LEAST 12" ABOVE GROUND, AND TO BE PLACED CLOSELY TOGETHER TO FIT INSIDE A SINGLE PEDESTAL.

GENERAL WATER/SEWER NOTES:

- 1. THE APPROXIMATE LOCATION OF ALL KNOWN UTILITIES (WATER, SEWER, GAS, PHONE, ELECTRIC, CABLE, ETC.) ARE SHOWN ON THE DRAWINGS. THE CONTRACTOR SHALL CONTACT ALL UTILITY OWNERS TO VERIFY BOTH LOCATION AND DEPTH OF UTILITIES BEFORE ANY WORK BEGINS.
2. ALL WATER MAINS SHALL BE INSTALLED WITH A FIVE-FOOT SIX INCH MINIMUM DEPTH COVER. IF GRADE CONFLICTS OCCUR WITH EXISTING UTILITIES OR OTHER OBSTRUCTIONS, THE PROPOSED WATER MAIN GRADE CAN BE VARIED PROVIDED THE FIVE-FOOT SIX INCH MINIMUM DEPTH OF COVER IS MAINTAINED.
3. ALL FITTINGS (BENDS, CROSSED, PLUGS, VALVES AND TEES) TO HAVE A CONCRETE THRUST BLOCK INSTALLED IN ACCORDANCE WITH THE THRUST BLOCK TABLE SHOWN ON THE DETAIL SHEET.
4. FOLLOW ALL CDH (COLORADO DEPARTMENT OF HEALTH) REGULATIONS FOR WATER AND SEWER LINE CROSSINGS.
5. THE CONTRACTOR WILL BE RESPONSIBLE FOR RESTORING ANY DISTURBED AREAS IN ACCORDANCE WITH SPECIFICATIONS.
6. ALL REMOVED WATER LINE APPURTENANCES TO BE SUPPLIED TO OWNER.
7. THE WATER LINE LOCATION SHOWN UTILIZES JOINT DEFLECTION. (A MAX. OF 3' PER JOINT)
8. MARK ENDS OF ALL SEWER SERVICE LINES WITH FENCE POST & COLORED INSULATED WIRE, 3-WAY SWING TIES, AND DEPTH TO SERVICE.
9. CONTRACTOR TO VERIFY THE GRADE OF ALL EXISTING SEWER LINES BEFORE INSTALLING ANY PIPE TO VERIFY INVERT ELEVATIONS.
10. CONTRACTOR SHALL POTHOLE ALL MISCELLANEOUS UTILITIES THAT WILL CROSS OR PARALLEL THE LINE PRIOR TO INSTALLING NEW LINE.
11. PLAN VIEW DISTANCE BETWEEN MANHOLES IS CENTERLINE TO CENTERLINE OF MANHOLES.
12. ALL KNOWN SERVICES WHICH TIE INTO THE EXISTING MAIN ARE SHOWN. ANY SERVICE WHICH IS NOT SHOWN BUT TIES INTO MAIN SHALL BE REPLACED AND TIED INTO NEW MAIN.
13. REPLACE ALL DISTURBED ASPHALT BY MATCHING EXIST. DEPTHS AT A MINIMUM, OTHERWISE, USE 3" ASPHALT, 4" CL. 6 BASE COURSE & 10" CL.2 AGGREGATE.
14. THE SEWER MANHOLES SHOWN IN PLAN VIEW INDICATE THE LOCATION OF THE STEPS WITHIN THE MANHOLE AND MANHOLE RIM LOCATION BY A BLACKENED CIRCLE.
15. WATER LINE VALVES ARE TO BE PLACED IN ASPHALT AND AWAY FROM CONCRETE UNLESS OTHERWISE NOTED.
16. WATER LINE SERVICES SHALL BE SPACED APART AND FROM FITTINGS AS PER MANUFACTURER'S RECOMMENDATIONS.
17. ALL FIRE HYDRANTS SHALL BE ORIENTATED SO THE STREAMER CONNECTION IS FACING THE ROADWAY.
18. WATER MAIN SHALL BE C900 CLASS 200 DR-14.

GENERAL UTILITY NOTES:

- 1. THE APPROXIMATE LOCATION OF ALL KNOWN UTILITIES (WATER, SEWER, GAS, PHONE, ELECTRIC, CABLE, ETC.) ARE SHOWN ON THE DRAWINGS. THE CONTRACTOR SHALL CONTACT ALL UTILITY OWNERS TO VERIFY BOTH LOCATION AND DEPTH OF UTILITIES BEFORE ANY WORK BEGINS.
2. THE CONTRACTOR WILL BE RESPONSIBLE FOR RESTORING ANY DISTURBED AREAS IN ACCORDANCE WITH SPECIFICATIONS.
3. FOLLOW ALL CDPHE (COLORADO DEPARTMENT OF HEALTH & ENVIRONMENT) REGULATIONS FOR WATER AND SEWER LINE CROSSINGS & COA SEPARATION REQUIREMENTS.
4. REPLACE ALL DISTURBED ASPHALT WITH 4" CDOT 5 MIX ASPHALT (2" BASE LIFT + 2" TOP LIFT) ON 6" LIFT OF COMPACTED CLASS 6 ROAD BASE OVER NON-EXPANSIVE SUB-BASE MATERIAL.

PAVEMENT NOTES:

- 1. THE CONTRACTOR SHALL SUBMIT A PAVING SEQUENCE SCHEDULE TO THE ENGINEER AT LEAST 10 WORKING DAYS PRIOR TO BEGINNING THE PAVING OPERATION.
2. THE CONTRACTOR SHALL SUBMIT HOT MIX ASPHALT LONGITUDINAL JOINT AND PAVEMENT MARKING PLAN PRIOR TO THE PRE-PAVING CONFERENCE PER CDOT STANDARD SPECIFICATIONS SECTION 401.
3. PAVING AND PLACEMENT OF BASE COURSE SHALL NOT BEGIN UNTIL THE ENGINEER HAS APPROVED THE SUBGRADE.
4. FOR APPROXIMATE PLAN QUANTITIES OF PAVEMENT MATERIALS, THE FOLLOWING RATES OF APPLICATION WERE USED:
TACK COAT EMULSIFIED ASPHALT (SLOW-SETTING) @ 0.1 GALS./SQ. YD. (DILUTED)
BITUMINOUS PAVEMENT @ 147 LBS. / CU. FT.
AGGREGATE BASE COURSE (CLASS 3) @ 133 LBS./ CU. FT.
AGGREGATE BASE COURSE (CLASS 6) @ 133 LBS./ CU. FT.

STORM SEWER NOTES:

- 1. ALL PIPING SHALL BE HDPE CULVERT PIPE.
2. AT ALL STORMWATER/POTABLE WATER CROSSINGS SDR-26 PIPE SHALL BE USED IN THE STORM SEWER SYSTEM.
3. ALL MANHOLES SHALL BE 4' PRECAST CONCRETE, HAVE AN ECCENTRIC CONE AND COMPLY WITH THE NOTES ON THE STORM SEWER DETAIL.
4. ALL DRAIN INLETS SHOWN IN THE SWALE ALIGNMENT SHALL BE THE TYPE 4 CATCH BASIN AS SHOWN ON THE DRAINAGE DETAIL.
5. ALL DRAIN INLETS SHOWN IN GUTTER PANS SHALL BE TYPE 1 DRAIN INLET AS SHOWN ON THE DRAINAGE DETAIL.

REVEGETATION NOTES:

- 1. ALL NON-BUILDING PAD AREAS DISTURBED BY ROAD OR UTILITY CONSTRUCTION OR OVER-LOT GRADING SHALL BE REVEGETATED WITH DRYLAND SEED MIXTURE.
2. FOR DRYLAND SEEDING AREAS, PROVIDE FERTILIZER WITH COMMERCIAL TYPE MIXTURE OF 16-16-8 OR SIMILAR RATION.
3. MULCH ALL SEEDING AREAS WITH CONWEB LONG FIBER MULCH.
4. PROVIDE EROSION CONTROL BLANKET ON ALL SLOPES OF 2:1 OR STEEPER.
5. PRIOR TO REVEGETATION, PLANTING OR TOPSOIL PLACEMENT, ALL CUT OR FILL SLOPES WILL BE CONTOURED TO BLEND WITH ADJACENT TERRAIN.
6. SEEDING SHALL BE DONE BY HYDROSEEDING, DRILLING, OR HAND BROADCASTING.
7. DRYLAND SEEDING SHALL BE PERFORMED AS SOON AS PRACTICAL AFTER COMPLETING OF CONSTRUCTION.
8. HYDROSEEDING WILL OCCUR WHERE THERE ARE HAZARDOUS DISTURBED SLOPES AND AREAS OF DISTURBANCE WITH 15% SLOPES OR GREATER.
9. SEEDING MATERIAL TO BE USED FOR RECLAMATION:

SEEDING RATE: 2 LBS PER 1000 SQUARE FEET (OR 25 LBS PER ACRE)

Table with 3 columns: #, SPECIES, COMMON NAME. Lists various grass species like ORYZOPSIS HYMENOIDES, FESTUCA IDAHOENSIS, etc.

UTILITY CONTACT INFORMATION:

COMCAST - Cable Television MICHAEL JOHNSON 970-945-7292
CENTURYLINK - Telephone JASON SHARPE 970-384-0238
XCEL ENERGY - Electric & Gas SAMANTHA WAKEFIELD 970-625-6098
TOWN OF NEW CASTLE - Water and Sewer JOHN WENZEL 970-984-0669



Castle Valley Ranch Preliminary/Final Plat and Development Plan Set PA 17

Table with columns for Date, By, and Revision. Includes a vertical label 'Preliminary Not For Construction'.

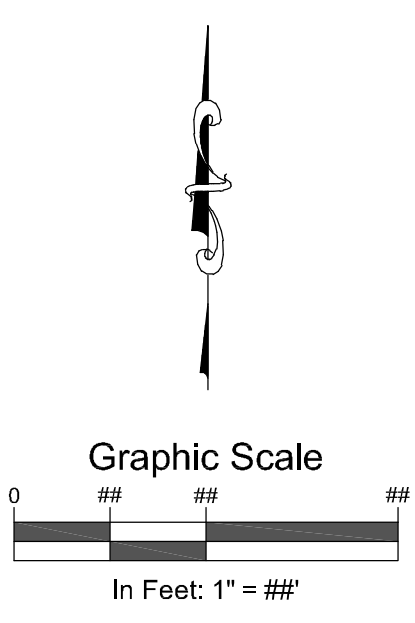
Job No. 2000-109.029
Drawn by: JM
Date: 2.12.20
QC: DJC
File: CVR-LegAbbGen

General Notes



SUMMARY OF EARTHWORK QUANTITIES	PROJECT TOTALS
UNCLASSIFIED EXCAVATION NET QUANTITY (COMPUTER)	139,400 CY
EMBANKMENT MATERIAL (COMPLETE IN PLACE) NET QUANTITY (COMPUTER)	120,500 CY
ASSUME 15% COMPACTION FACTOR FOR EXCAVATION	138,600 CY
NET EXCAVATION	800 CY
STRIP AND STOCKPILE TOPSOIL (6")	12,000 CY

FOR INFORMATION ONLY
 QUANTITIES CALCULATED FROM BOTTOM OF
 STRUCTURAL SECTION AND ASSUMING REMOVAL AND
 PLACEMENT OF 6" TOPSOIL



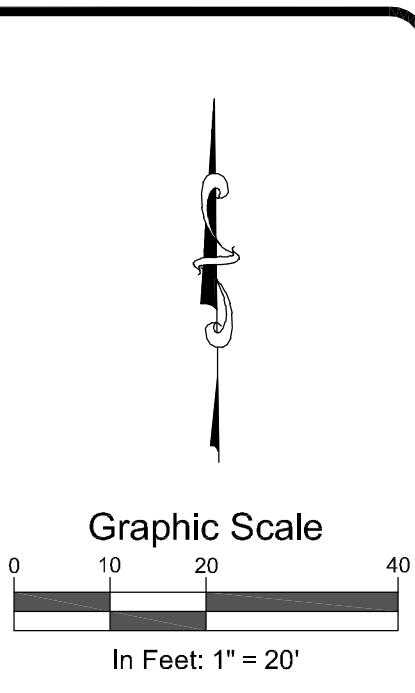
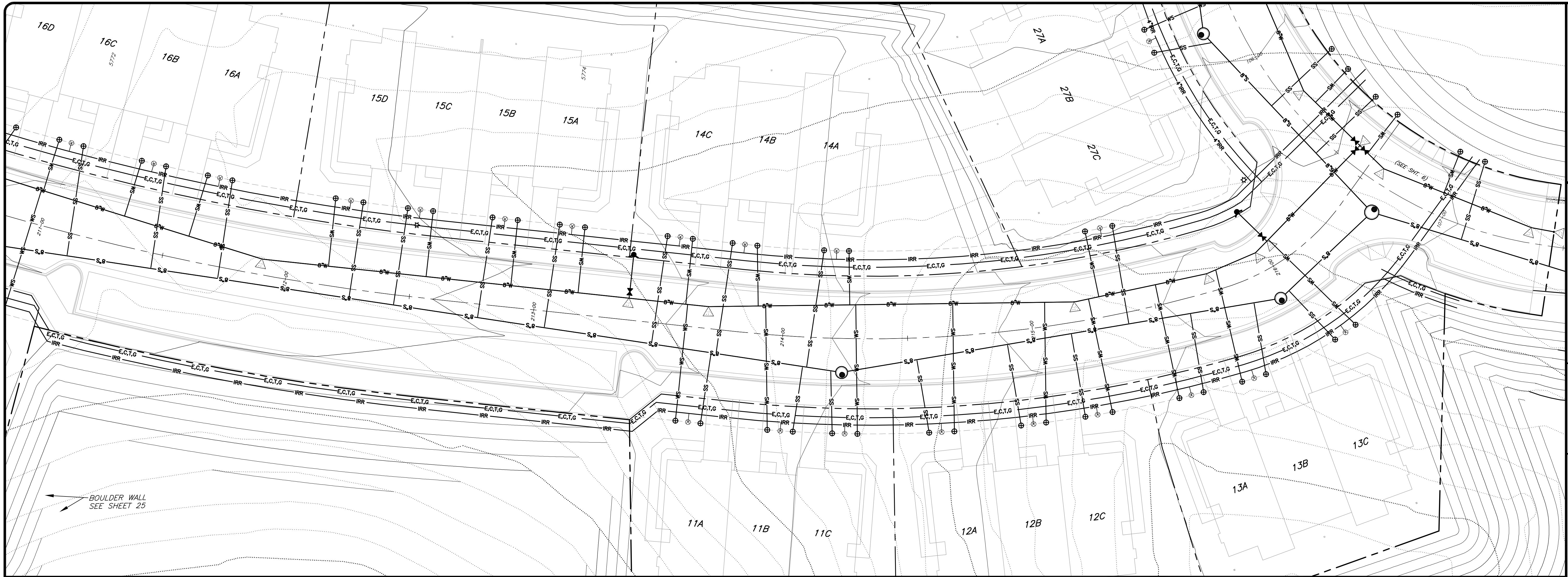
SGM
 118 West Sixth Street, Suite 200
 Glenwood Springs, CO 81601
 970.945.1004 www.sgm-inc.com

Castle Valley Ranch
 Preliminary/Final Plat and
 Development Plan Set PA 17

Project Milestones:	Preliminary Not For Construction
2000-109.023	JM
2.12.20	PE
DJC	DJC
CVR-Grads&DefPnd	

Overall Grading Plan

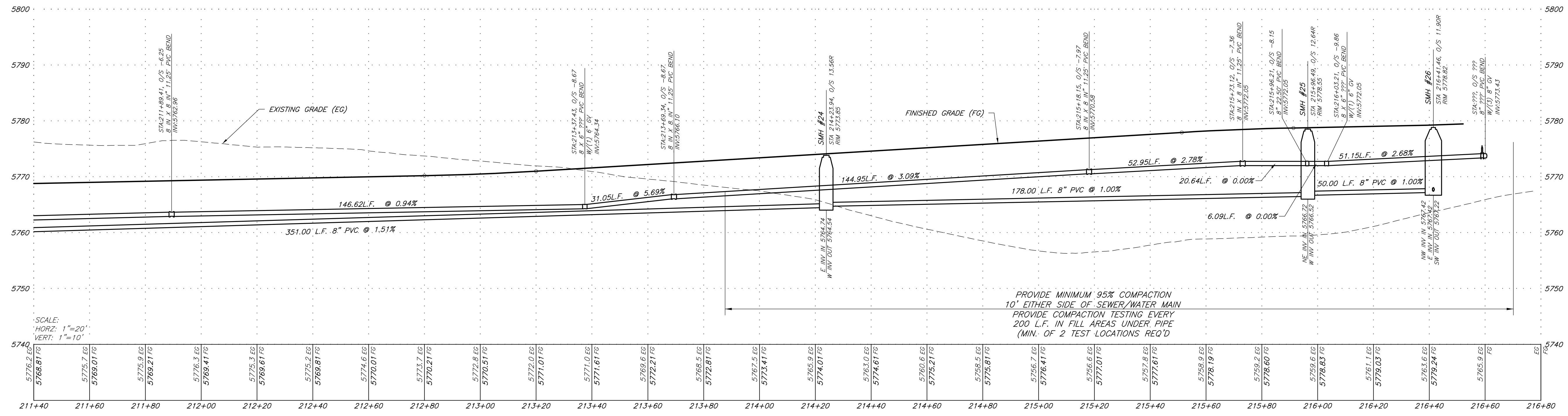
K:\2000\2000-109\023pa17-Emore\17-023pa17-Civil\17-023pa17-Civil-Grads&DefPnd.dwg Plotfile: 2/12/2020 10:17 AM By: Frances Blockwelder

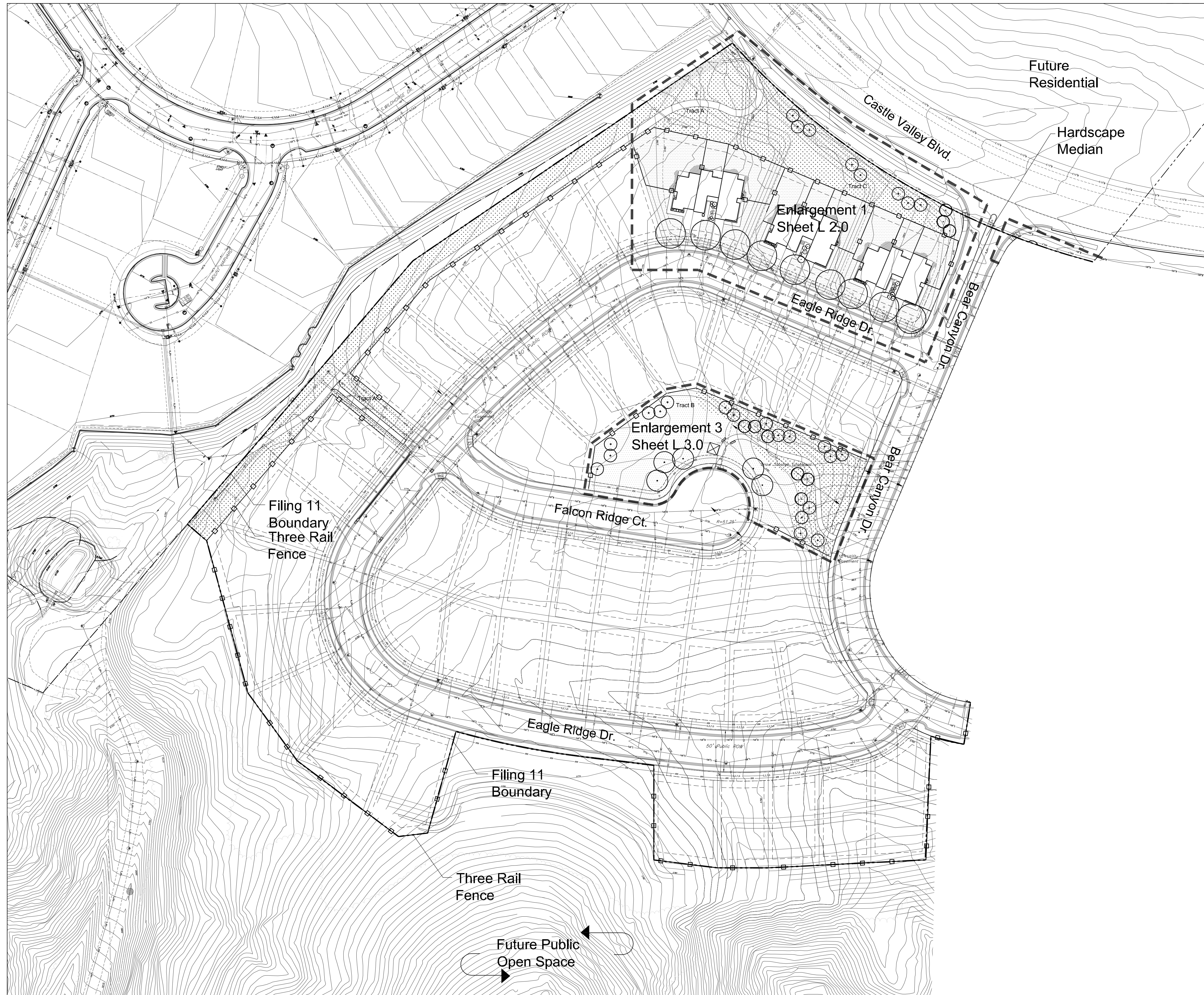


SGM
 118 West Sixth Street, Suite 200
 Glenwood Springs, CO 81601
 970.945.1004 www.sgm-inc.com

Castle Valley Ranch
 Preliminary/Final Plat and
 Development Plan Set PA 17

X:\2000\2000-109\029617-Emore\1-Design\Civil\15-SheetSet\17-Eng\17-Utilities-Utility.dwg Printed: 2/12/2020 10:33 AM By: Frances Blackwelder

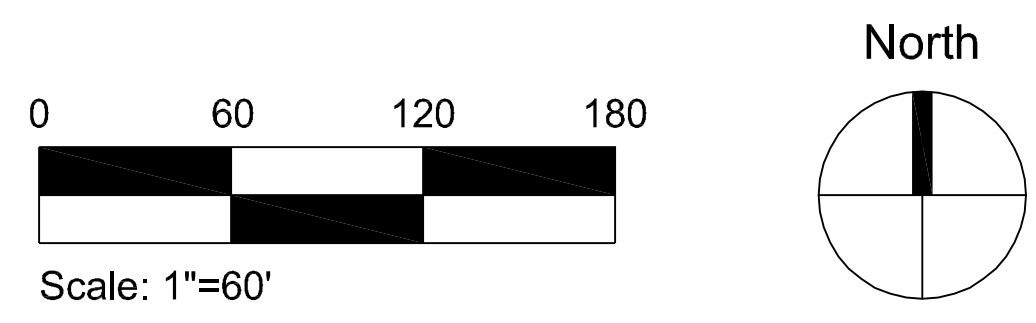




LEGEND

	2 1/2" CAL. DECIDUOUS TREE
	6'-10" HT. EVERGREEN TREE
	1 1/2" CAL. ORNAMENTAL TREE
	5 GAL. EVERGREEN SHRUBS
	5 GAL. DECIDUOUS SHRUBS
	1 GAL. ORNAMENTAL GRASSES
	EDGER
	THREE RAIL FENCE
	SOD
	NATIVE SEED MIX
	SHREDDED CEDAR BARK MULCH - 3" DEPTH

THIS CONCEPTUAL LANDSCAPE PLAN BASED ON THE 2008 VILLAGE HOMES SUBMITTAL IS REPRESENTATIVE OF THE LEVEL OF LANDSCAPE IMPROVEMENTS THAT CVR INVESTORS RECENTLY COMPLETED ON FILING 10.



LANDSCAPE PLAN: OVERALL

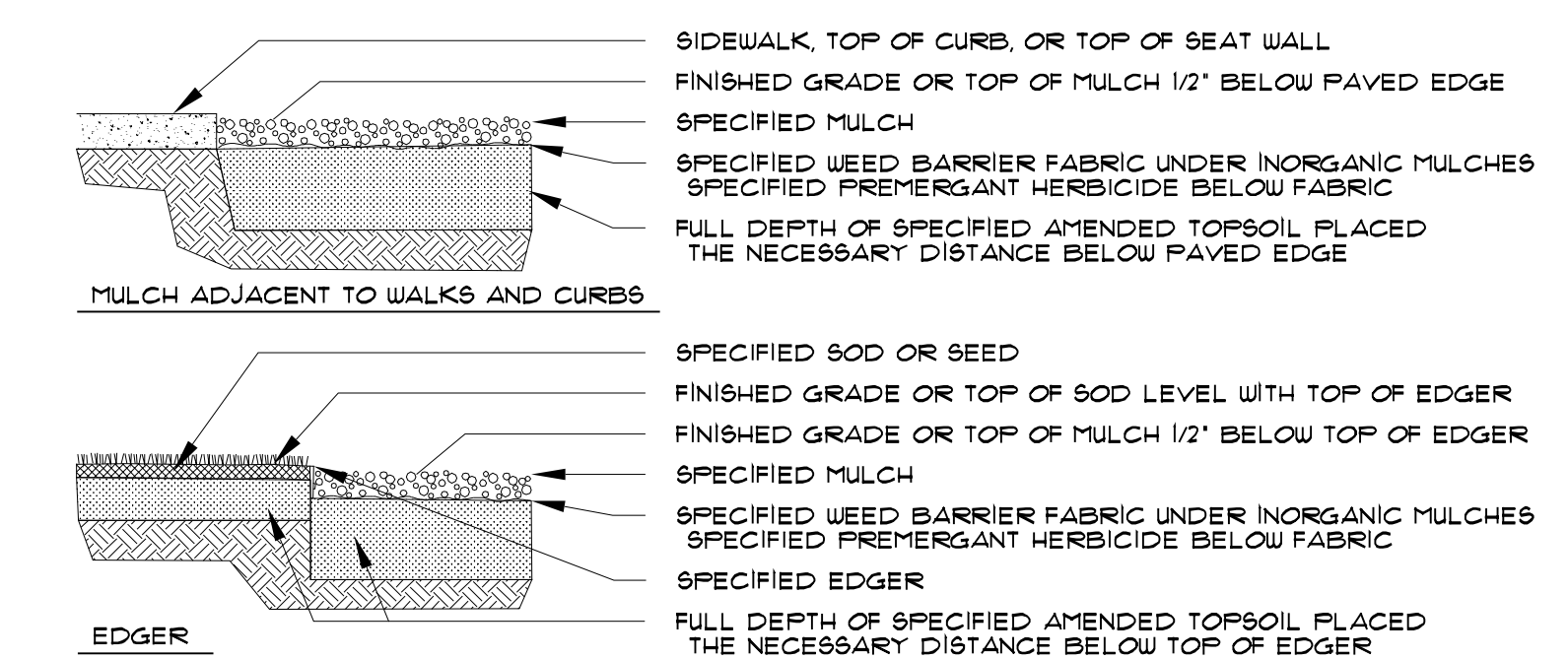
<p>SCHMUESER GORDON MEYER ENGINEERS & SURVEYORS</p>	<p>SCHMUESER GORDON MEYER 118 W. 6TH STREET, SUITE 200 GLENWOOD SPRINGS, COLORADO 81601 (970) 945-1004 FAX (970) 945-5948 ASPEN, COLORADO (970) 925-6727 CRESTED BUTTE, CO (970) 349-5355</p>	<p>CASTLE VALLEY RANCH PLANNING AREA #17 FINAL PUD DEVELOPMENT PLAN</p>		<table border="1"> <thead> <tr> <th>NUM. REV.</th> <th>REVISION</th> <th>DATE</th> <th>BY</th> </tr> </thead> <tbody> <tr> <td>1</td> <td>TOWN SUBMITTAL</td> <td>7-24-08</td> <td>KL</td> </tr> </tbody> </table>	NUM. REV.	REVISION	DATE	BY	1	TOWN SUBMITTAL	7-24-08	KL	<p>CONSILIUM DESIGN, INC. 7353 South Alton Way, Suite 135 Centennial, CO 80112 Tel: 303.224.9520 Fax: 303.224.9524</p>	<p>Job No. TBD Drawn by: VKG Date: 06-03-2008 QC: PE: File: FDPUBMITTAL</p>	<p>L1.0</p>
		NUM. REV.	REVISION	DATE	BY										
1	TOWN SUBMITTAL	7-24-08	KL												
<p>LANDSCAPE PLAN: OVERALL</p>		<p>Scale: 1"=60'</p>	<p>North</p>												



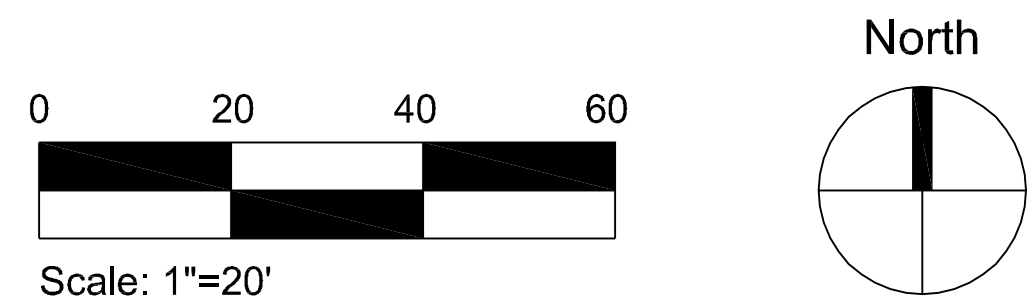
LEGEND

- 2 1/2" CAL. DECIDUOUS TREE
- 6'-10" HT. EVERGREEN TREE
- 1 1/2" CAL. ORNAMENTAL TREE
- 5 GAL. EVERGREEN SHRUBS
- 5 GAL. DECIDUOUS SHRUBS
- 1 GAL. ORNAMENTAL GRASSES
- EDGER
- THREE RAIL FENCE
- SOD
- NATIVE SEED MIX
- SHREDDED CEDAR BARK MULCH - 3" DEPTH

THIS CONCEPTUAL LANDSCAPE PLAN BASED ON THE 2008 VILLAGE HOMES SUBMITTAL IS REPRESENTATIVE OF THE LEVEL OF LANDSCAPE IMPROVEMENTS THAT CVR INVESTORS RECENTLY COMPLETED ON FILING 10.



1 EDGE TREATMENT DETAIL
L2.0 NOT TO SCALE



ENLARGEMENT 1

SCHMUESER GORDON MEYER
 ENGINEERS & SURVEYORS

SCHMUESER GORDON MEYER
 118 W. 6TH STREET, SUITE 200
 GLENWOOD SPRINGS, COLORADO 81601
 (970) 945-1004 FAX (970) 945-5948
 ASPEN, COLORADO (970) 925-6727
 CRESTED BUTTE, CO (970) 349-5355

CASTLE VALLEY RANCH
 PLANNING AREA #17
 FINAL PUD DEVELOPMENT PLAN

NUM. REV.	REVISION	DATE	BY
1	TOWN SUBMITTAL	7-24-08	KL

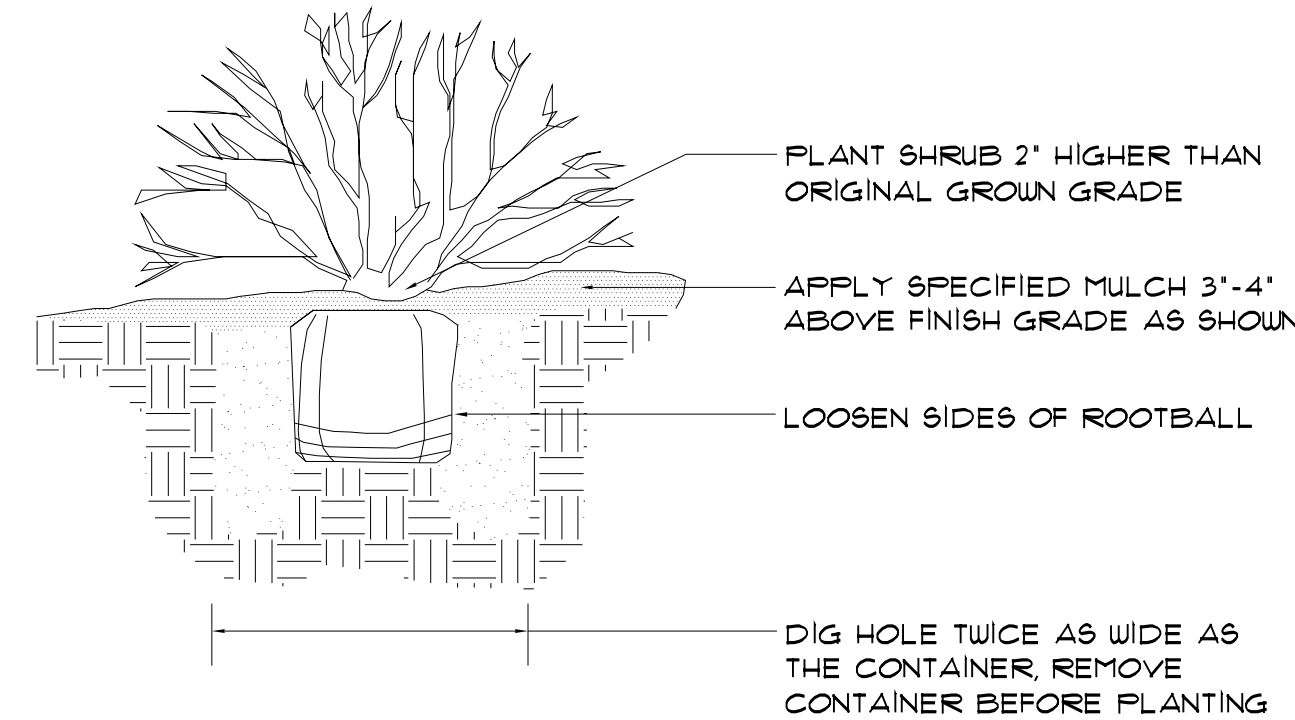
CONSILIUM DESIGN, INC.
 7353 South Alton Way, Suite 135
 Centennial, CO 80112
 Tel: 303.224.9520
 Fax: 303.224.9524

Job No.	TBD
Drawn by:	VKG
Date:	06-03-2008
QC:	PE:
File:	FDP/SUBMITTAL

L2.0

LANDSCAPE NOTES

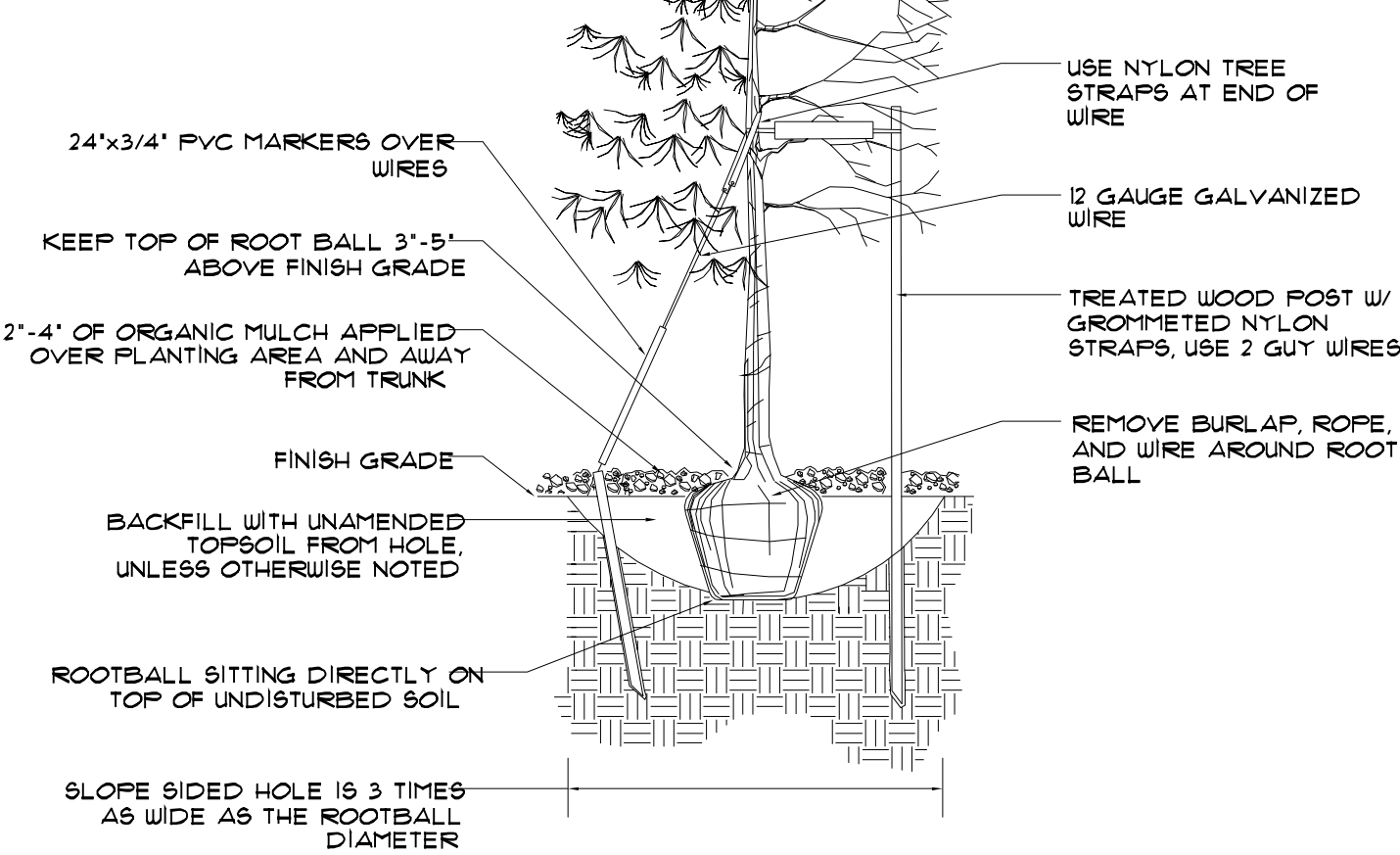
- ALL WORK SHALL CONFORM TO LOCAL CITY AND COUNTY CODES. ALL WORK SHALL BE IN ACCORDANCE WITH OSHA CODES AND STANDARDS. NOTHING INDICATED ON THE LANDSCAPE DRAWINGS SHALL RELIEVE THE CONTRACTOR FROM COMPLYING WITH ANY APPROPRIATE SAFETY REGULATIONS.
- THE OWNER, SUCCESSORS, AND ASSIGNS SHALL BE RESPONSIBLE FOR THE INSTALLATION, MAINTENANCE, AND REPLACEMENT OF ALL LANDSCAPING MATERIALS SHOWN ON THE APPROVED LANDSCAPE DRAWINGS ON FILE WITH THE CITY/ COUNTY. ALL LANDSCAPING SHALL BE INSTALLED AS SHOWN ON THE LANDSCAPE DRAWINGS PRIOR TO THE ISSUANCE FOR THE CERTIFICATE OF OCCUPANCY, OR PER CITY/ COUNTY REGULATIONS.
- CONTRACTOR SHALL VERIFY (CALL FOR UTILITY LOCATES) LOCATION OF ALL EXISTING UTILITIES AND STRUCTURES PRIOR TO EXCAVATION OR TRENCHING.
- CONTRACTOR IS RESPONSIBLE FOR THE REPAIR OF ANY SETTLING DUE TO EXCAVATION AND TRENCHING.
- CONTRACTOR SHALL PROTECT AND PRESERVE ALL EXISTING ADJACENT PROPERTY'S AMENITIES/ IMPROVEMENTS, UNLESS OTHERWISE NOTED.
- CONTRACTOR SHALL REMOVE ALL DEBRIS FROM THE RIGHT-OF-WAY AND/ OR PUBLIC PROPERTY AT THE END OF EACH WORK DAY.
- CONTRACTOR SHALL BE RESPONSIBLE FOR REPLACEMENT OF ANY DAMAGE DUE TO PROJECT'S CONSTRUCTION. CONTRACTOR SHALL BE RESPONSIBLE FOR THE COST OF REPAIR TO UTILITIES, ADJACENT LANDSCAPE, AND THE SUBCONTRACTOR'S OPERATIONS DURING CONSTRUCTION AND/ OR THE SPECIFIED MAINTENANCE PERIOD. THE CONTRACTOR SHALL FULLY COMPENSATE THE OWNER FOR ANYTHING DISTURBED AND/ OR DESTROYED THAT IS NOT DESIGNATED FOR DEMOLITION.
- ALL UTILITY EASEMENTS SHALL REMAIN UNOBSTRUCTED AND FULLY ACCESSIBLE ALONG THEIR ENTIRE LENGTH FOR USE OF MAINTENANCE EQUIPMENT.
- SEE CIVIL ENGINEER'S DRAWINGS FOR GRADING AND DRAINAGE, EROSION CONTROL, PAVING AND SLEEVES, UTILITIES, AND OTHER ENGINEERED DETAILS.
- A MINIMUM OF 3-4 INCHES OF TOPSOIL (INCLUDING REMOVED AND REPLACED SITE TOPSOIL) IS REQUIRED ON ALL REVEGETATED AREAS, AND ALL TOPSOIL REMOVED FROM PA 17-19 SHALL BE REDISTRIBUTED ON AREAS OF THE PROJECT FROM WHICH IT WAS REMOVED EXCLUSIVE OF ROADWAYS, SIDEWALKS, BUILDING FOOTPRINTS AND OTHER NON-REVEGETATED AREAS.
- ALL LANDSCAPE AREAS SHALL RECEIVE SOIL PREPARATION AT A RATE OF (3) THREE CUBIC YARDS PER 1000 SQUARE FEET (0.324' OF TOPSOIL).
- ALL AREAS DISTURBED BY GRADING OR ANY ACTION DUE TO CONSTRUCTION SHALL BE REPAIRED AND SEEDED IF NECESSARY. SEE SPECIFIED SEED MIX INFORMATION.
- STEEL EDGER SHALL BE PROVIDED AROUND ALL PLANTING BEDS ADJACENT TURF AREAS. EDGER SHALL BE GALVANIZED STEEL, ROLLED TOP EDGE, AND INTERLOCKING. EDGER IS NOT NECESSARILY ADJACENT OR PARALLEL TO CURBS, WALLS, AND WALKS.
- ALL PLANTING BEDS SHALL BE MULCHED WITH EITHER 3" DEPTH SHREDDED CEDAR MULCH UNLESS OTHERWISE NOTE ON THE PLANS. LANDSCAPE FABRIC SHOULD BE USED IN PLANTING BEDS.
- ALL PLANTS OF THE SAME SPECIES AND SIZE SHALL HAVE MATCHING HEIGHT AND FORM, UNLESS OTHERWISE NOTED. ALL PLANTS SHALL CONFORM TO THE "AMERICAN STANDARD FOR NURSERY STOCK."
- GRAPHIC SYMBOLS ON LANDSCAPE DRAWINGS PRESIDE OVER WRITTEN PLANT QUANTITIES.
- ALL PLANTS SHALL BE PLANTED USING AN EQUALLY SPACED TRIANGULAR PATTERN, UNLESS OTHERWISE NOTED AND/ OR SHOWN ON THE LANDSCAPE DRAWINGS.
- ALL PLANTS INSTALLED SHALL FOLLOW THE PLANT SCHEDULE ON THE APPROVED LANDSCAPE DRAWINGS, IF FOR ANY REASON CHANGES OR SUBSTITUTIONS ARE REQUIRED TO THE PLANT SCHEDULE, THEN THE OWNER MUST FIRST RECEIVE APPROVAL FROM THE CITY/ COUNTY.
- CONTRACTOR SHALL REPORT ANY DISCREPANCY FOUND IN THE FIELD VERSUS THE LANDSCAPE DRAWINGS IMMEDIATELY TO THE LANDSCAPE ARCHITECT, OWNER'S REPRESENTATIVE, AND/ OR THE CITY/ COUNTY PRIOR TO ANY CONSTRUCTION OR DEMOLITION ACTIVITY. FAILURE TO MAKE SUCH CONFLICTS KNOWN WILL RESULT IN THE CONTRACTOR'S LIABILITY TO RELOCATE OR REPAIR.
- THE FINAL LOCATION OF ALL PLANTS SHALL BE SUBJECT TO THE APPROVAL OF THE OWNER'S REPRESENTATIVE PRIOR TO INSTALLATION.
- CONTRACTOR SHALL PROVIDE A TWO-YEAR GROWING SEASON WARRANTY FOR ALL PLANT MATERIAL FROM THE DATE OF FINAL INSPECTION, UNLESS OTHERWISE DIRECTED BY LANDSCAPE ARCHITECT, OWNER, OR CITY/ COUNTY.
- ALL PLANTS SHALL BE WATERED, CARED FOR, AND PROTECTED FROM DAMAGING WEATHER EFFECTS UNTIL ESTABLISHED.
- ALL PLANTS SHALL BE INSTALLED IMMEDIATELY UPON DELIVERY TO THE PROJECT SITE. IF THIS IS NOT POSSIBLE, PLANTS SHALL BE HEELED IN AND WATERED TO HELP PREVENT ANY DAMAGE.
- FOR TREES NOT IN PLANTING BEDS, ALLOW A 3'-0" DIAMETER BED (TREE RING) WITHOUT SEED/ SOD AROUND ROOT COLLAR. APPLY 3" DEPTH SHREDDED CEDAR MULCH AROUND COLLAR FOLLOWING SEED/ SOD INSTALLATION. NO LANDSCAPE FABRIC OR EDGER IS NECESSARY FOR TREE RINGS.
- FOR SEED/ SOD TYPE AND INSTALLATION SEE THE PLANT SCHEDULE AND LANDSCAPE DRAWINGS.
- ALL TOPSOIL REMOVED FROM THIS PARK SITE SHALL BE BROUGHT BACK AND RE-SPREAD AT THE SAME DEPTH.



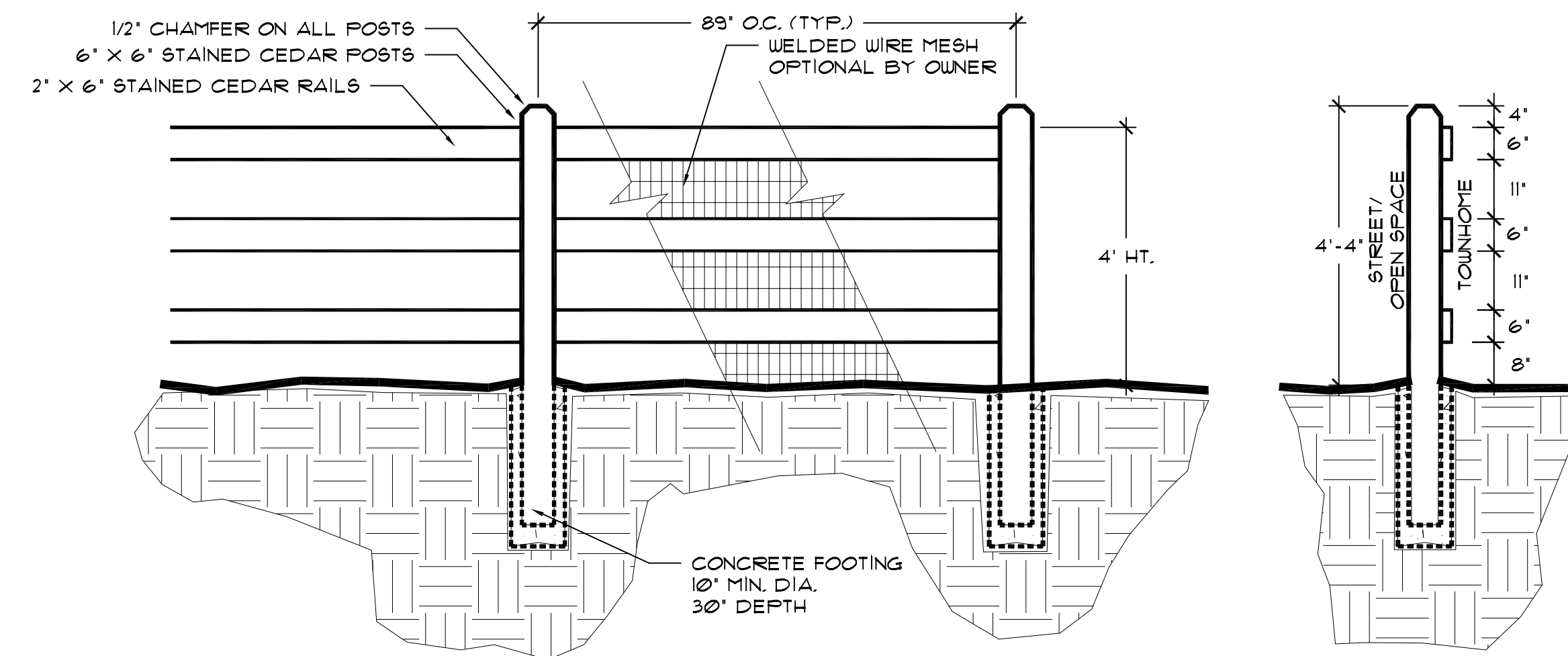
PLANTING NOTES:

- BACKFILL AND WATER-IN THOROUGHLY.
- BROKEN OR CRUMBLING ROOTBALLS WILL BE REJECTED.
- PRUNE DAMAGED OR DEAD PORTIONS PRIOR TO PLANTING.

2 SHRUB PLANTING DETAIL
L4.0 NOT TO SCALE



3 TREE PLANTING DETAIL
L4.0 NOT TO SCALE



4 THREE RAIL FENCE DETAIL
L4.0 SCALE: 1/2"=1'-0"

PLANT SCHEDULE

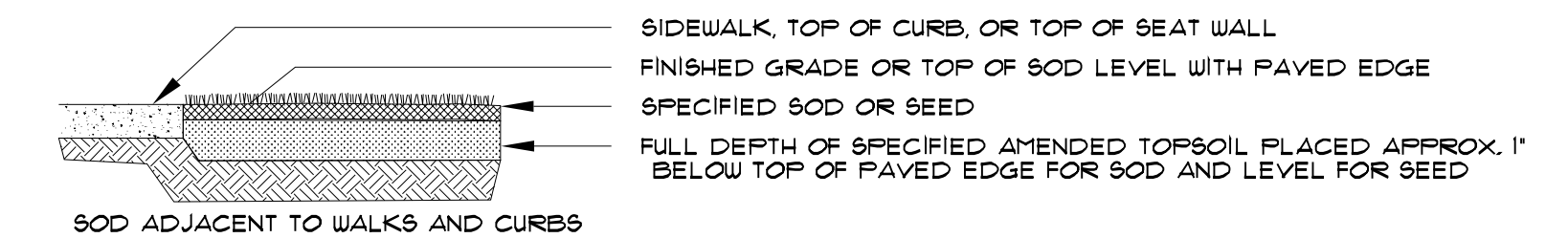
QUAN.	KEY	COMMON NAME	BOTANICAL NAME	SIZE
DECIDUOUS TREES				
	APA	AUTUMN PURPLE ASH	Fraxinus americana 'Autumn Purple'	2 1/2" CAL.
	DBM	DEBORAH NORWAY MAPLE	Acer platanoides 'Deborah'	2 1/2" CAL.
EVERGREEN TREES				
	AUS	AUSTRIAN PINE	Pinus nigra	6'-10' HT. SEE PLAN
	CB5	COLORADO BLUE SPRUCE	Picea pungens var. glauca	6'-10' HT. SEE PLAN
	POP	PONDEROSA PINE	Pinus Ponderosa	6'-10' HT. SEE PLAN
ORNAMENTAL TREES				
	GIN	GINNALA MAPLE	Acer ginnala	6'-8" HT. CLUMP
	TCH	THORNLESS COCKSPUR HAWTHORN	Crataegus crus-galli inermis	1 1/2" CAL.
EVERGREEN SHRUBS				
	ARJ	ARCADIA JUNIPER	Juniperus sabina 'Arcadia'	5 GAL.
DECIDUOUS SHRUBS				
	AWS	ANTHONY WATERER SPIREA	Spiraea japonica 'Anthony Waterer'	5 GAL.
	GMC	GREEN MOUND CURRANT	Ribes alpinum 'Green Mound'	5 GAL.
	MKL	MISS KIM LILAC	Syringa patula 'Miss Kim'	5 GAL.
	MTH	MOUNTAIN MAHOGANY	Cercocarpus montanus	5 GAL.
	RAB	RABBITRUSH	Chrysothamnus naus. albicaulis	5 GAL.
ORNAMENTAL GRASSES/PERENNIALS				
	DFG	DWARF FOUNTAIN GRASS	Pennisetum alopecuroides 'Hameln'	1 GAL.
	KFG	KARL FOER FEATHER REED GRASS	Calamagrostis acut. 'Karl Foerster'	1 GAL.
	MAG	MAIDEN GRASS	Miscanthus sinensis 'Gracellimus'	1 GAL.

KEY	GROUND COVER GRASSES	MIX	INSTALLATION
	TURF GRASS/ SOD	100% FINE BLADE TALL FESCUE	SEEDING RATE: 8 POUNDS PER 1000 SQUARE FEET SOIL PREP: 3 C.Y./1000 SF
	NATIVE SEED	60% EPHRAIM CRESTED WHEATGRASS 15% HARD FESCUE 10% BLUE GRAMA 10% PERENNIAL RYEGRASS, VANTAGE 5% BUFFALO GRASS	SEEDING RATE: 4 TO 5 POUNDS PER 1000 SQUARE FEET SOIL PREP: 1 C.Y./1000 SF

WILDFLOWER SEED MIX- TRACT B

COMMON NAME	BOTANICAL NAME	QUANTITY
CORNFLOWER	Centaurea cyanus	10%
WALLFLOWER	Cheiranthus allionii	5%
SHASTA DAISY	Chrysanthemum maximum	5%
SWEET WILLIAM	Dianthus barbatus	3%
AFRICAN DAISY	Diosporhysca aurantiaca	10%
PURPLE CONEFLOWER	Echinacea purpurea	10%
CALIFORNIA POPPY	Eschscholzia californica	5%
ANNUAL GAILLARDIA	Gaillardia pulchella	3%
PERENNIAL GAILLARDIA	Gaillardia x grandiflora	4%
BABY'S BREATH	Gypsophila paniculata	10%
SPURRED SNAPDRAGON	Linaria maroccana	2%
BLUE FLAX	Linum lewisii	5%
SWEET ALYSSUM	Lobularia maritima	5%
EVENING PRIMROSE	Oenothera missouriensis	3%
CORN POPPY	Papaver rhoeas	2%
ROCKY MOUNTAIN PENSTEMON	Penstemon strictus	2%
BLACK EYED SUSAN	Rudbeckia hirta	10%
CATCHFLY	Silene armeria	2%
GARLAND DAISY	Chrysanthemum coronarium	6%

As supplied by Applewood Seed Company and Arkansas Valley Seeds under the name of Rocky Mountain Wildflower Mix. Broadcast seed at 6-8 lbs mix per acre.



1 EDGE TREATMENT DETAIL
L4.0 NOT TO SCALE

THIS CONCEPTUAL LANDSCAPE PLAN BASED ON THE 2008 VILLAGE HOMES SUBMITTAL IS REPRESENTATIVE OF THE LEVEL OF LANDSCAPE IMPROVEMENTS THAT CVR INVESTORS RECENTLY COMPLETED ON FILING 10.

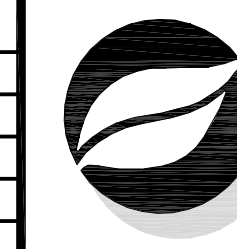
LANDSCAPE PLAN: PLANTING NOTES & DETAILS



SCHMUESER GORDON MEYER
118 W. 6TH STREET, SUITE 200
GLENWOOD SPRINGS, COLORADO 81601
(970) 945-1004, FAX (970) 945-5948
ASPEN, COLORADO (970) 925-6727
CRESTED BUTTE, CO (970) 349-5355

CASTLE VALLEY RANCH
PLANNING AREA #17
FINAL PUD DEVELOPMENT PLAN

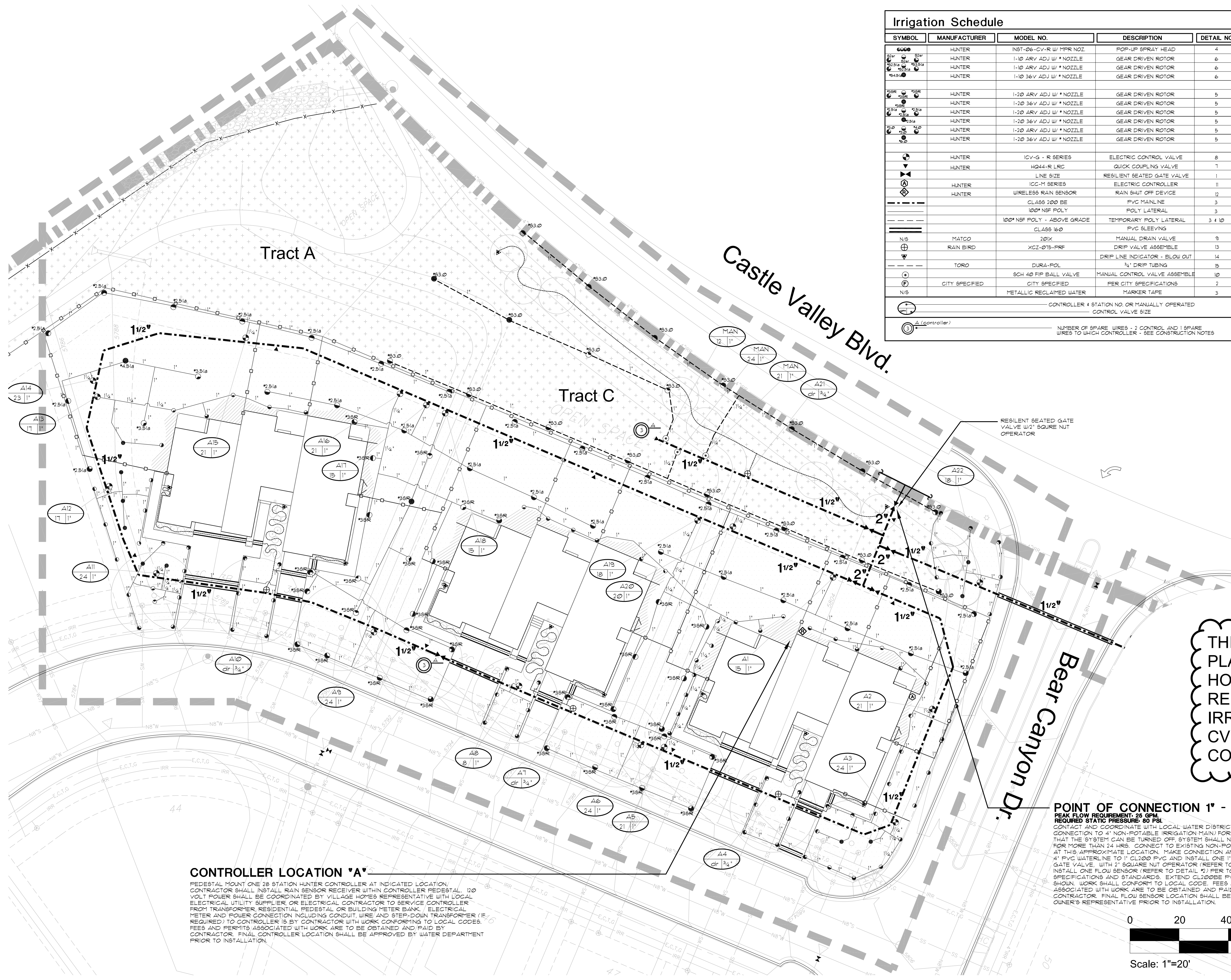
NUMBER	REVISION	DATE	BY
1	TOWN SUBMITTAL	7-24-08	KL



CONSILIUM DESIGN, INC.
7353 South Alton Way, Suite 135
Centennial, CO 80112
Tel: 303.224.9520
Fax: 303.224.9524

Job No. TBD
Drawn by: VKG
Date: 06-03-2008
QC: PE:
Title: FDP/SUBMITTAL

L3.0



Irrigation Schedule				
SYMBOL	MANUFACTURER	MODEL NO.	DESCRIPTION	DETAIL NO.
(Symbol)	HUNTER	1-10 ARV ADJ W/ * NOZZLE	GEAR DRIVEN ROTOR	4
(Symbol)	HUNTER	1-10 ARV ADJ W/ * NOZZLE	GEAR DRIVEN ROTOR	6
(Symbol)	HUNTER	1-10 36V ADJ W/ * NOZZLE	GEAR DRIVEN ROTOR	6
(Symbol)	HUNTER	1-20 ARV ADJ W/ * NOZZLE	GEAR DRIVEN ROTOR	5
(Symbol)	HUNTER	1-20 36V ADJ W/ * NOZZLE	GEAR DRIVEN ROTOR	5
(Symbol)	HUNTER	1-20 ARV ADJ W/ * NOZZLE	GEAR DRIVEN ROTOR	5
(Symbol)	HUNTER	1-20 36V ADJ W/ * NOZZLE	GEAR DRIVEN ROTOR	5
(Symbol)	HUNTER	1-20 ARV ADJ W/ * NOZZLE	GEAR DRIVEN ROTOR	5
(Symbol)	HUNTER	1-20 36V ADJ W/ * NOZZLE	GEAR DRIVEN ROTOR	5
(Symbol)	HUNTER	1CV-G - R SERIES	ELECTRIC CONTROL VALVE	8
(Symbol)	HUNTER	HQ44-R LRC	QUICK COUPLING VALVE	7
(Symbol)	HUNTER	LINE SIZE	RESILIENT SEATED GATE VALVE	1
(Symbol)	HUNTER	ICC-M SERIES	ELECTRIC CONTROLLER	11
(Symbol)	HUNTER	WIRELESS RAIN SENSOR	RAIN SHUT OFF DEVICE	12
(Symbol)		CLASS 200 BE	PVC MAINLINE	3
(Symbol)		100' NSF POLY	POLY LATERAL	3
(Symbol)		100' NSF POLY - ABOVE GRADE	TEMPORARY POLY LATERAL	3 & 10
(Symbol)		CLASS 160	PVC SLEEVING	
(Symbol)	MATCO	20K	MANUAL DRAIN VALVE	9
(Symbol)	RAIN BIRD	XCZ-075-PRF	DRIP VALVE ASSEMBLY	13
(Symbol)			DRIP LINE INDICATOR - BLOW OUT	14
(Symbol)	TORO	DURA-POL	3/4" DRIP TUBING	15
(Symbol)		SCH 40 FIP BALL VALVE	MANUAL CONTROL VALVE ASSEMBLY	10
(Symbol)	CITY SPECIFIED	CITY SPECIFIED	PER CITY SPECIFICATIONS	7
(Symbol)	NIS	METALLIC RECLAIMED WATER	MARKER TAPE	3

Irrigation Construction Notes

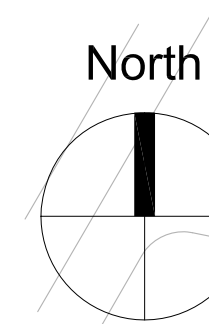
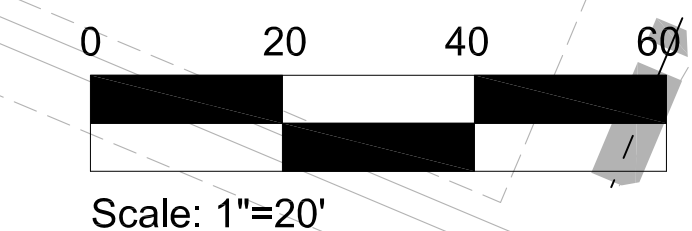
- DRAWINGS AND BASE INFORMATION** - ALL BASE AND PLANTING INFORMATION HAVE BEEN PROVIDED BY CONSILIUM DESIGN INC. THE CONTRACTOR IS RESPONSIBLE TO NOTIFY HYDROSYSTEMS-KDI OF ANY DISCREPANCIES BETWEEN THE UTILITY OR PLANTING PLANS AND THE IRRIGATION PLAN. IF CONTRACTOR FAILS TO NOTIFY HYDROSYSTEMS-KDI AND MAKES CHANGES TO THE IRRIGATION SYSTEM DESIGN, HE ASSUMES ALL COSTS AND LIABILITIES ASSOCIATED WITH THOSE FIELD CHANGES. REFER TO SPECIFICATIONS FOR ADDITIONAL PROJECT REQUIREMENTS.
- SYSTEM PRESSURE** - HYDROSYSTEMS-KDI HAS CONTACTED THE LOCAL WATER DISTRICT THAT SERVES THIS SITE AND THEY HAVE BEEN TOLD THAT THE STATIC WATER PRESSURE IN THIS AREA SHOULD BE 80 PSI. THE CONTRACTOR IS RESPONSIBLE TO FIELD VERIFY PRESSURE PRIOR TO COMMENCING ANY CONSTRUCTION AND NOTIFY HYDROSYSTEMS-KDI OF ANY VARIANCE FROM THE STATED PRESSURE. IF CONTRACTOR FAILS TO FIELD VERIFY PRESSURE AND/OR NOTIFY HYDROSYSTEMS-KDI OF ANY VARIATIONS FROM THIS PRESSURE, THEN HE ASSUMES ALL CONSTRUCTION AND ENGINEERING COSTS ASSOCIATED WITH SYSTEM MODIFICATIONS REQUIRED TO ACCOMMODATE ACTUAL SITE PRESSURE. THIS SYSTEM HAS BEEN DESIGNED FOR A REQUIRED STATIC PRESSURE OF 80 PSI (NON-POTABLE WATER SOURCE).
- IRRIGATION SYSTEM OPERATION INTENT** - THIS IRRIGATION SYSTEM HAS BEEN DESIGNED TO IRRIGATE THE ESTABLISHED LANDSCAPE WITHIN A SIX NIGHT PER WEEK SIX HOUR PER NIGHT WATERING WINDOW. ESTABLISHED WATERING WILL REQUIRE UP TO TWICE AS MUCH IRRIGATION FOR A FOUR TO SIX WEEK PERIOD. THE DESIGN IS BASED ON THE FOLLOWING PROJECTED WEEKLY APPLICATION RATES AFTER ESTABLISHMENT. THESE FIGURES ARE BASED ON A 30-YEAR AVERAGE WEATHER DATA AND WILL NEED TO BE ADJUSTED DUE TO SEASONAL CHANGE AND WEATHER CONDITIONS ABOVE AND BELOW THE AVERAGE VALUES UTILIZED.
 - BLUEGRASS TURF 1.75" PER WEEK PEAK SEASON
 - NATIVE SEED MIXES 1.00" PER WEEK PEAK SEASON (TWO SEASONS)
 NOTE: IT IS THE INTENT OF THIS DESIGN THAT NATIVE AREAS WOULD ONLY BE IRRIGATED FOR ESTABLISHMENT.
- IT IS THE INTENT OF THIS DESIGN THAT ALL IRRIGATION EQUIPMENT BE INSTALLED WITHIN PROPERTY LIMITS AND WITHIN LANDSCAPED AREAS. ANY EQUIPMENT SHOWN OUTSIDE OF THESE LIMITS IS SHOWN IN THAT LOCATION FOR GRAPHICAL CLARITY ONLY. ALL VALVE BOXES SHALL BE INSTALLED AT A MINIMUM OF 2'-0" FROM EDGE OF ANY PAVED SURFACES. ALL VALVE BOXES SHALL BE PLACED A MINIMUM OF 3'-0" FROM THE CENTERLINE OF ANY DRAINAGE SWALE.
- SLEEVING** - ALL SLEEVING UNDER PAVED SURFACES SHOWN ON PLANS IS BY CONTRACTOR UNLESS OTHERWISE NOTED. SLEEVING SHALL BE INSTALLED IN THE SIZES AND QUANTITIES SHOWN ON PLANS OR BASED ON THE SCHEDULE BELOW. WHERE SLEEVES ARE SHOWN, BUT NOT LABELED, FOLLOW THE SCHEDULE BELOW. ALL MAINLINE CONTROL WIRES AND DRIP LINES UNDER PAVED SURFACES ARE TO BE INSTALLED IN SLEEVING.

SLEEVED PIPE SIZE/WIRE QUANTITY	REQUIRED SLEEVE SIZE AND QUANTITY
3/4" - 1 1/4" PIPING	2" PVC (1)
1 1/2" - 2" PIPING	4" PVC (1)
2 1/2" - 3" PIPING	6" PVC (1)
1 - 50 CONTROL WIRES	2" PVC (1)
- POP-UP SPRAY NOZZLES** - CONTRACTOR TO INSTALL PLASTIC NOZZLES ON ALL POP-UP SPRAY HEADS. INSTALL 1/2" SERIES NOZZLES ON ALL HEADS SPACED AT 1' TO 2'. INSTALL 1/2" SERIES NOZZLES ON ALL HEADS SPACED AT 8' TO 10'. INSTALL 1/2" SERIES NOZZLES ON HEADS SPACED LESS THAN 8'. INSTALL SIDE STRIP NOZZLES ON ALL HEADS WITH AN 'R' DESIGNATION AND RIGHT AND LEFT CORNER STRIP NOZZLES ON 6" POP-UP HEADS FOR ALL HEADS WITH AN 'R' OR 'L' DESIGNATION. VARIABLE ARC NOZZLES SHOULD BE UTILIZED ADJACENT TO CURVILINEAR SHRUB BEDS OR FOR ANY ANGLES THAT ARE NOT A STANDARD NOZZLE ANGLE.
- DRIP IRRIGATION** - REFER TO IRRIGATION DETAIL SHEET FOR DRIP Emitter QUANTITIES AND PLACEMENT.
- SPARE CONTROL WIRES** - CONTRACTOR SHALL EXTEND THREE SPARE WIRES (ONE COMMON AND 2 CONTROL WIRES) FROM EACH CONTROLLER TO THE END OF THE MAINLINE SERVING THAT CONTROLLER OR AS SHOWN ON THE PLANS. INSTALL SPARE WIRES IN 10" ROUND VALVE BOX WITH QUICK COUPLING VALVE. REFER TO SPECIFICATIONS FOR WIRE COLOR. SEE IRRIGATION SCHEDULE FOR ADDITIONAL INFORMATION.
- CONTRACTOR SHALL FINE TUNE/ADJUST THE IRRIGATION SYSTEM TO REDUCE/AVOID OVER SPRAY ONTO HARD SURFACES BY ADJUSTING NOZZLE DIRECTION AND NOZZLE RADIUS.
- NON-POTABLE WATER SOURCE** - CONTRACTOR SHALL INSTALL PURPLE CAPS / COVERS ON ALL SPRINKLER HEADS, QUICK COUPLER VALVES AND VALVE BOX LIDS. ALL CONTROL VALVES SHALL HAVE PURPLE SOLENOIDS AND HANDLES OR NON-POTABLE TAGS ATTACHED.

THIS CONCEPTUAL IRRIGATION PLAN BASED ON THE 2008 VILLAGE HOMES SUBMITTAL IS REPRESENTATIVE OF THE LEVEL OF IRRIGATION IMPROVEMENTS THAT CVR INVESTORS RECENTLY COMPLETED ON FILING 10.

CONTROLLER LOCATION 'A'
 PEDESTAL MOUNT ONE 28 STATION HUNTER CONTROLLER AT INDICATED LOCATION. CONTRACTOR SHALL INSTALL RAIN SENSOR RECEIVER WITHIN CONTROLLER PEDESTAL. 120 VOLT POWER SHALL BE COORDINATED BY VILLAGE HOMES REPRESENTATIVE WITH LOCAL ELECTRICAL UTILITY SUPPLIER OR ELECTRICAL CONTRACTOR TO SERVICE CONTROLLER FROM TRANSFORMER, RESIDENTIAL, PEDESTAL OR BUILDING METER BANK. ELECTRICAL METER AND POWER CONNECTION INCLUDING CONDUIT, WIRE AND STEP-DOWN TRANSFORMER (IF REQUIRED) TO CONTROLLER IS BY CONTRACTOR WITH WORK CONFORMING TO LOCAL CODES. FEES AND PERMITS ASSOCIATED WITH WORK ARE TO BE OBTAINED AND PAID FOR BY CONTRACTOR. FINAL CONTROLLER LOCATION SHALL BE APPROVED BY WATER DEPARTMENT PRIOR TO INSTALLATION.

POINT OF CONNECTION 1' - Non-Potable
 PEAK FLOW REQUIREMENT: 25 GPM
 REQUIRED STATIC PRESSURE: 80 PSI
 CONTACT AND COORDINATE WITH LOCAL WATER DISTRICT (PRIOR TO MAKING CONNECTION TO 4" NON-POTABLE IRRIGATION MAIN) FOR LOCATION AND TIME THAT THE SYSTEM CAN BE TURNED OFF. SYSTEM SHALL NOT BE INTERRUPTED FOR MORE THAN 24 HRS. CONNECT TO EXISTING NON-POTABLE 4" WATERLINE AT THIS APPROXIMATE LOCATION. MAKE CONNECTION AND TRANSITION FROM 4" PVC WATERLINE TO 1" CL200 PVC AND INSTALL ONE 1" RESILIENT SEATED GATE VALVE WITH 2" SQUARE NUT OPERATOR (REFER TO DETAIL 'A') AND INSTALL ONE FLOW SENSOR (REFER TO DETAIL 'A'). PER TOWN OF NEWCASTLE SPECIFICATIONS AND STANDARDS. EXTEND CLASS 200 PVC MAINLINE AS SHOWN. WORK SHALL CONFORM TO LOCAL CODE. FEES AND PERMITS ASSOCIATED WITH WORK ARE TO BE OBTAINED AND PAID FOR BY CONTRACTOR. FINAL FLOW SENSOR LOCATION SHALL BE APPROVED BY OWNER'S REPRESENTATIVE PRIOR TO INSTALLATION.



CALL UNCC
 THREE WORKING DAYS
 BEFORE YOU DIG
 1-800-922-1987
 or Call: www.UNCC.org
 UTILITY NOTIFICATION CENTER OF COLORADO

HydroSystems-KDI, Inc. Irrigation Consulting
 300 Union Blvd Suite 405
 Lakewood, Colorado 80228
 (303) 960-5384

SCHMUESER GORDON MEYER
 118 W. 6th Street, Suite 200
 Glenwood Springs, Colorado 81601
 (970) 945-1004 FAX (970) 945-5948
 Aspen, Colorado (970) 925-6727
 Crested Butte, CO (970) 349-5355

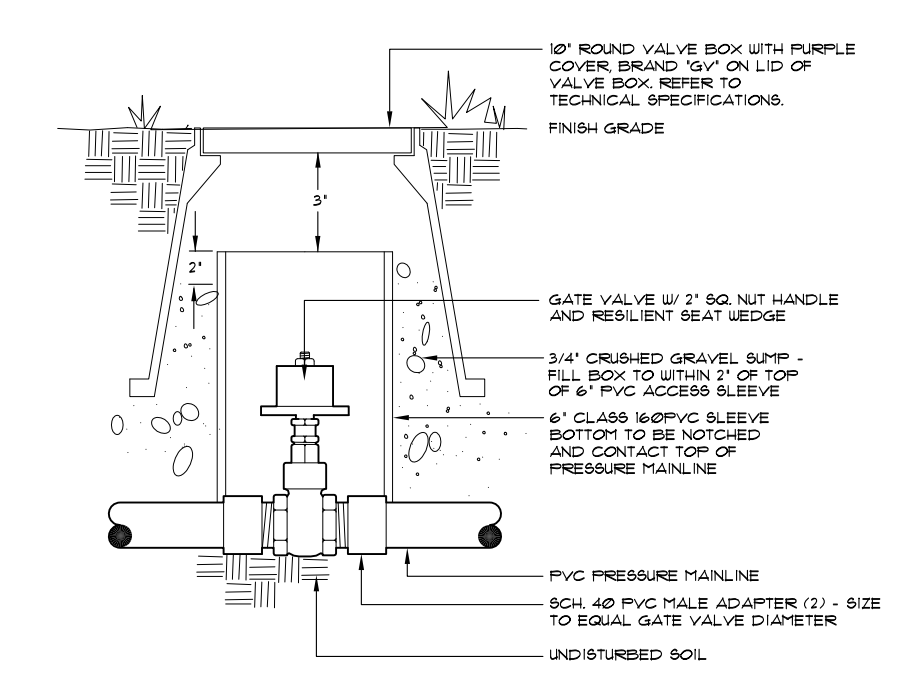
CASTLE VALLEY RANCH
 PLANNING AREA #17
 FINAL PUD DEVELOPMENT PLAN

NUM-BER	REVISION	DATE	BY

CONSILIUM DESIGN, INC.
 7353 South Alton Way, Suite 135
 Centennial, CO 80112
 Tel: 303.224.9520
 Fax: 303.224.9524

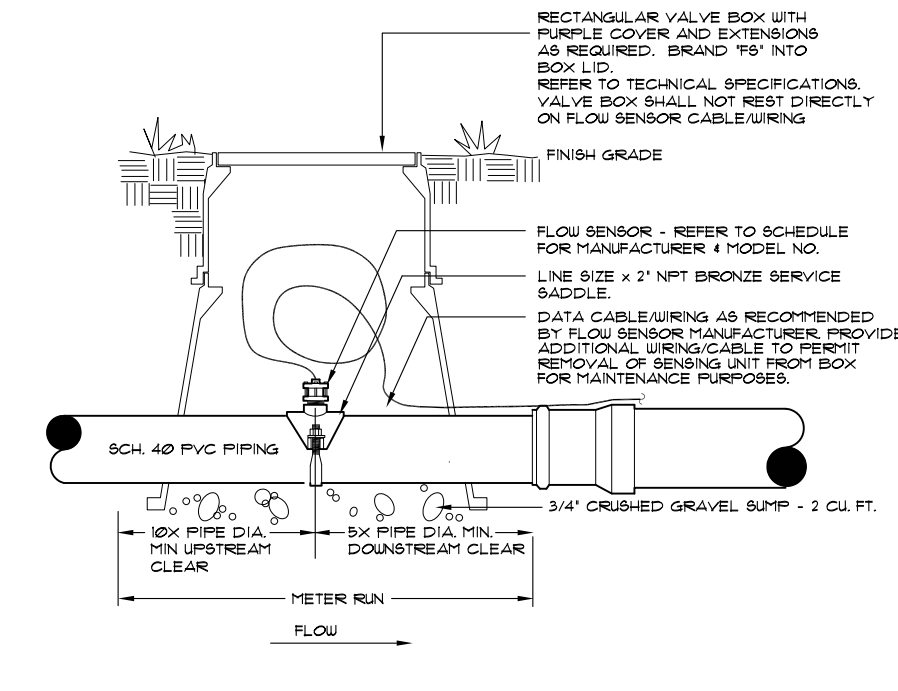
Job No. TBD
 Drawn by: JBM
 Date: 06-03-2008
 QC: PE:
 File: FDPSSUBMITTAL

IR1.0



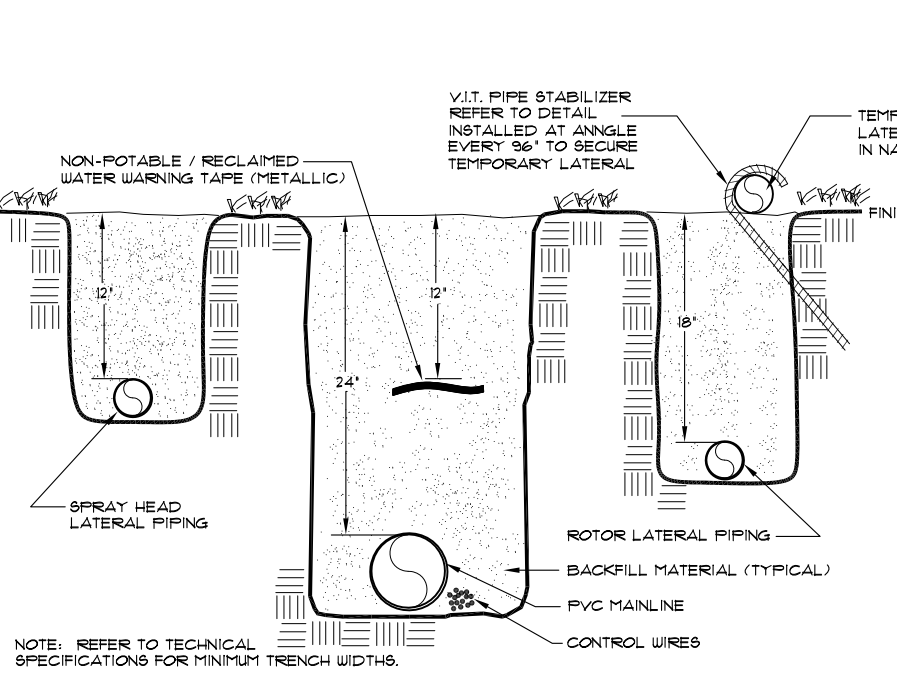
GATE VALVE

1



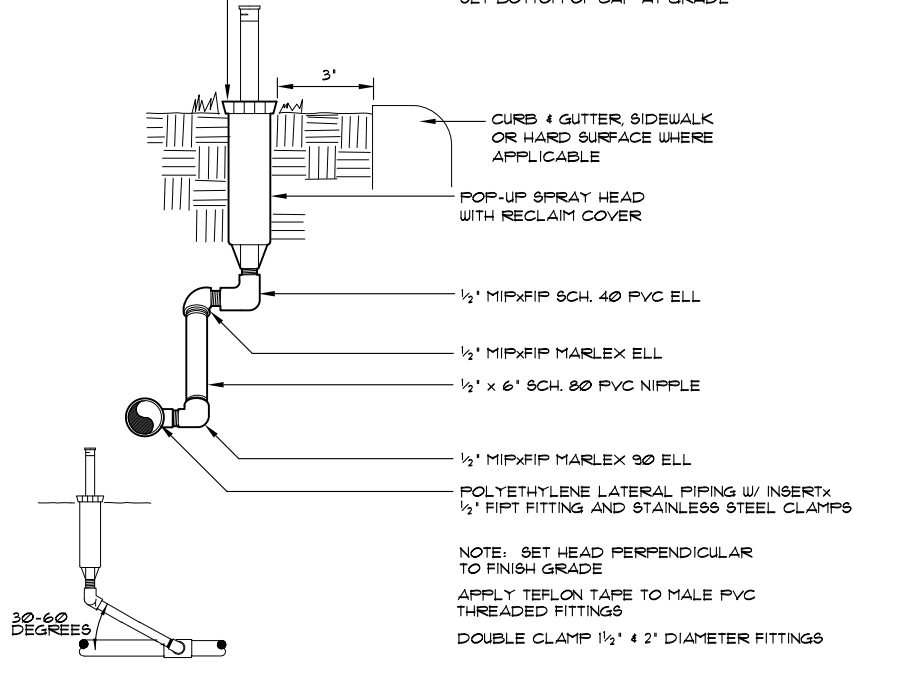
FLOW SENSOR

2



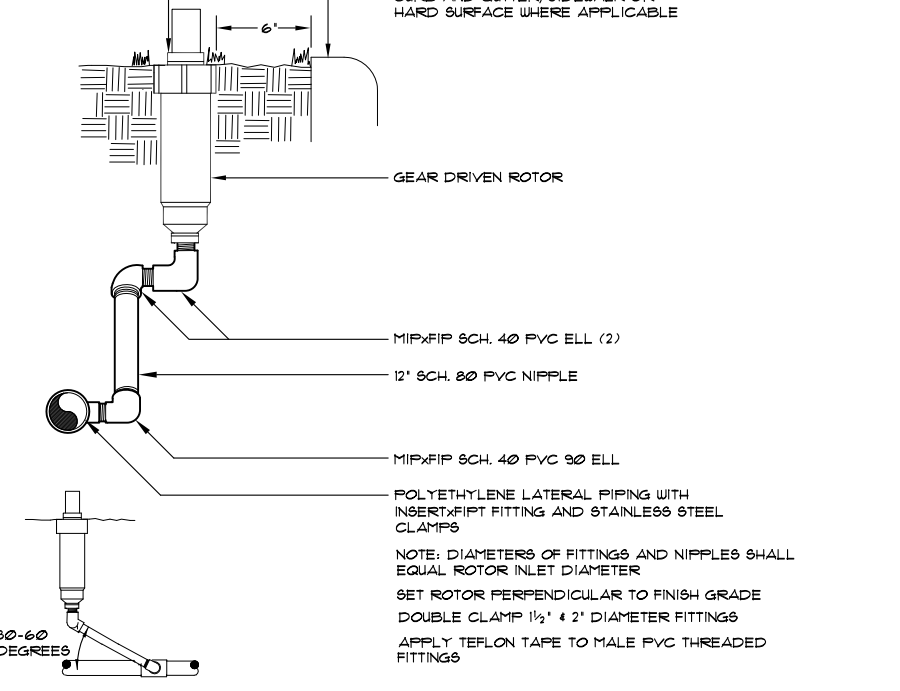
TRENCH

3



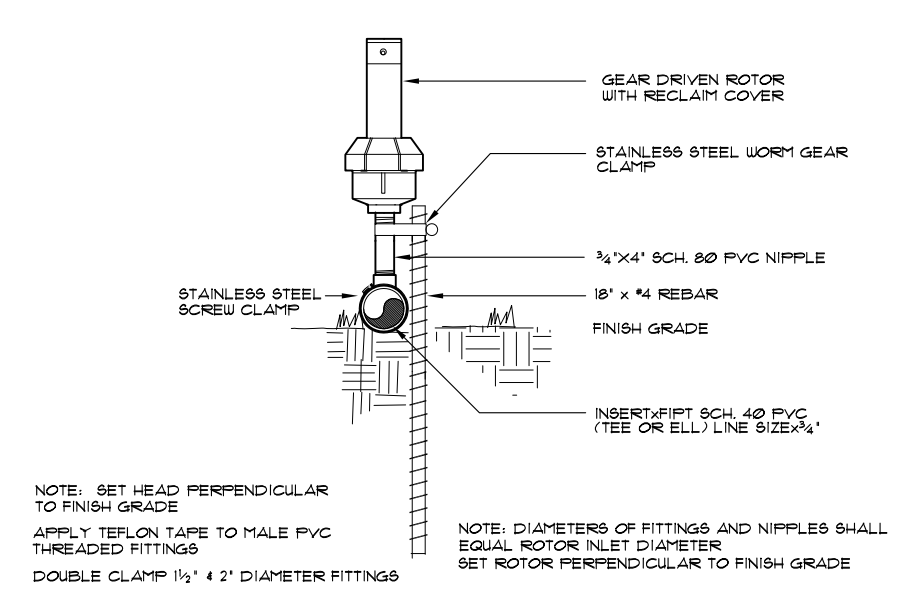
POP-UP SPRAY HEAD

4



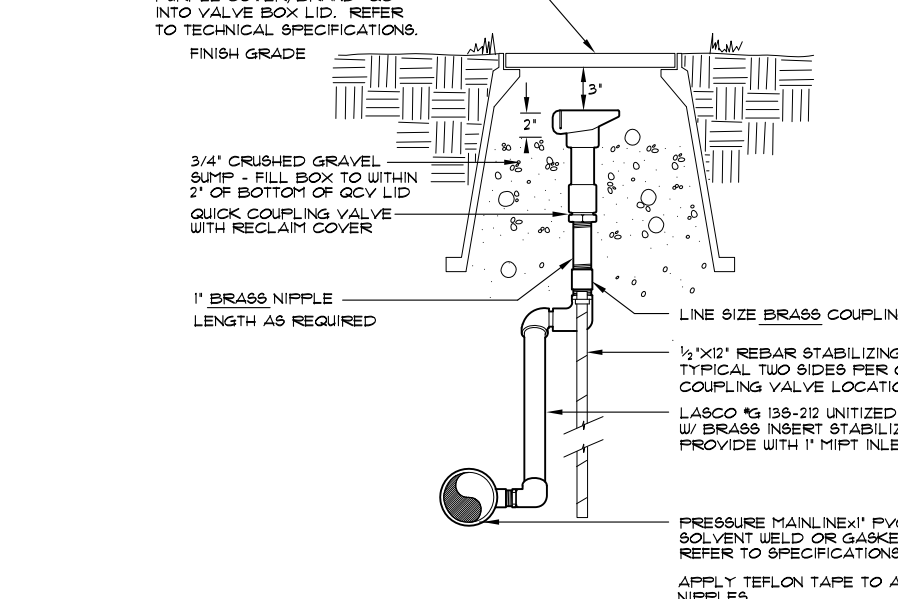
GEAR DRIVEN ROTOR

5



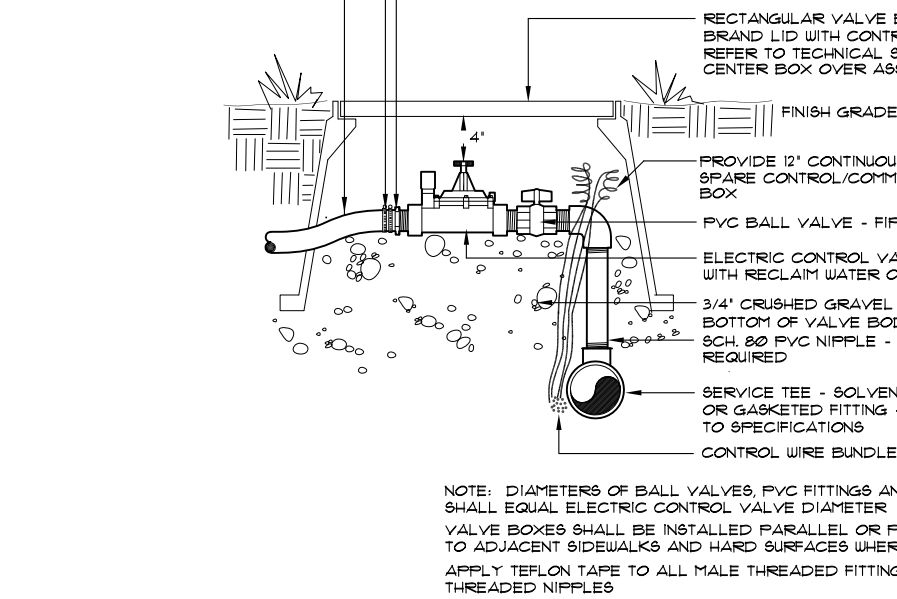
GEAR DRIVEN ROTOR ABOVE GRADE

6



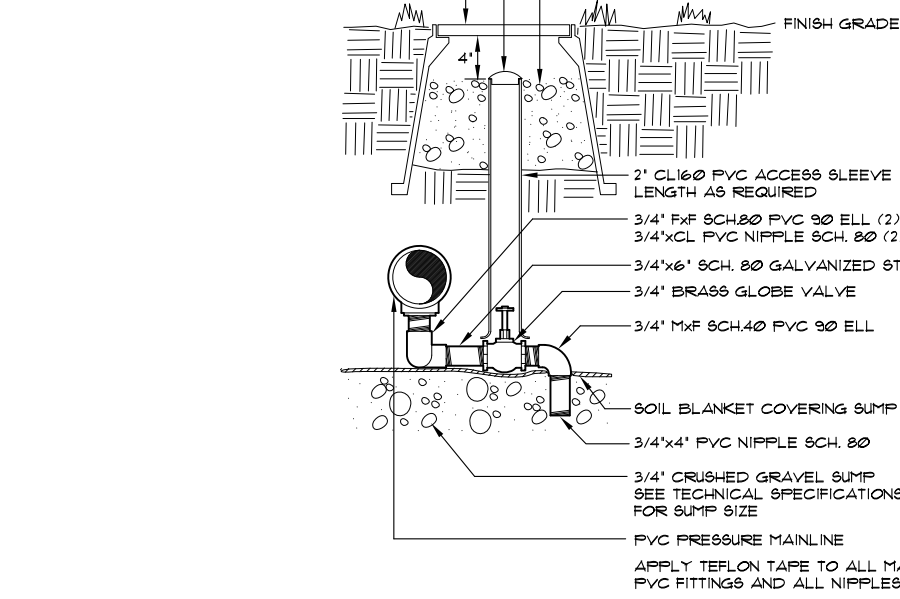
QUICK COUPLING VALVE

7



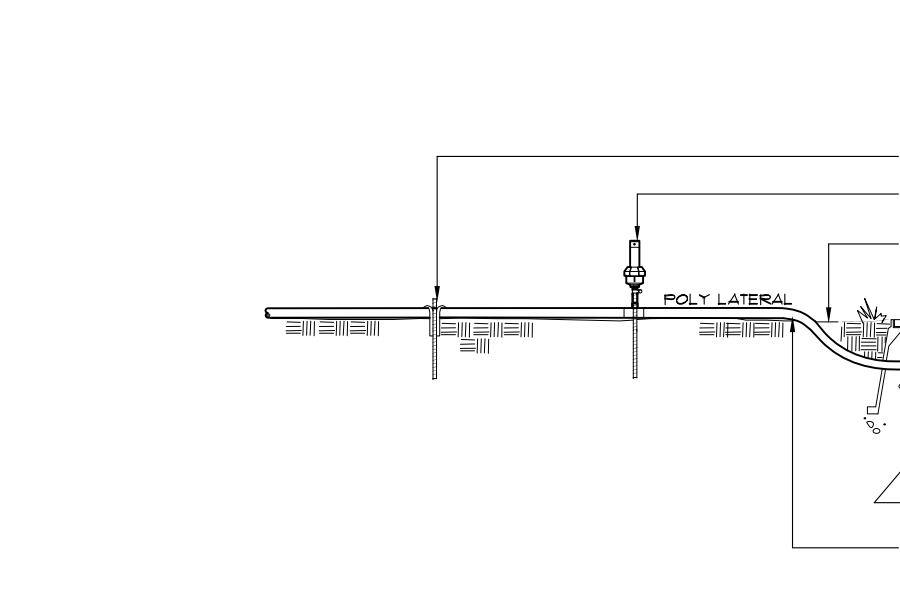
ELECTRIC CONTROL VALVE

8



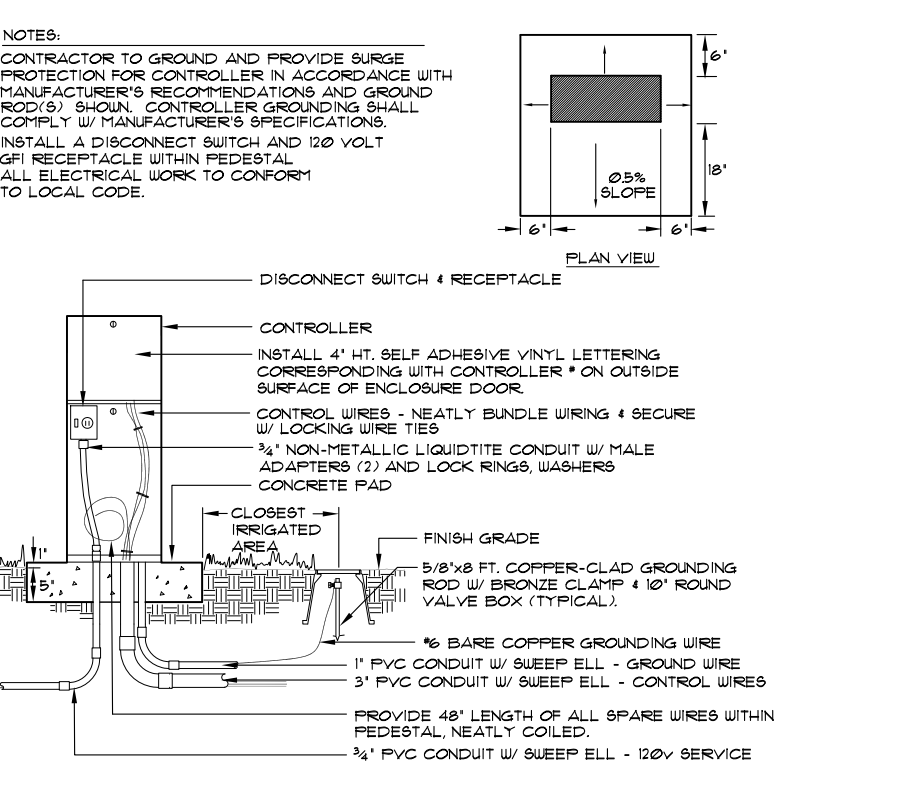
MANUAL DRAIN VALVE

9



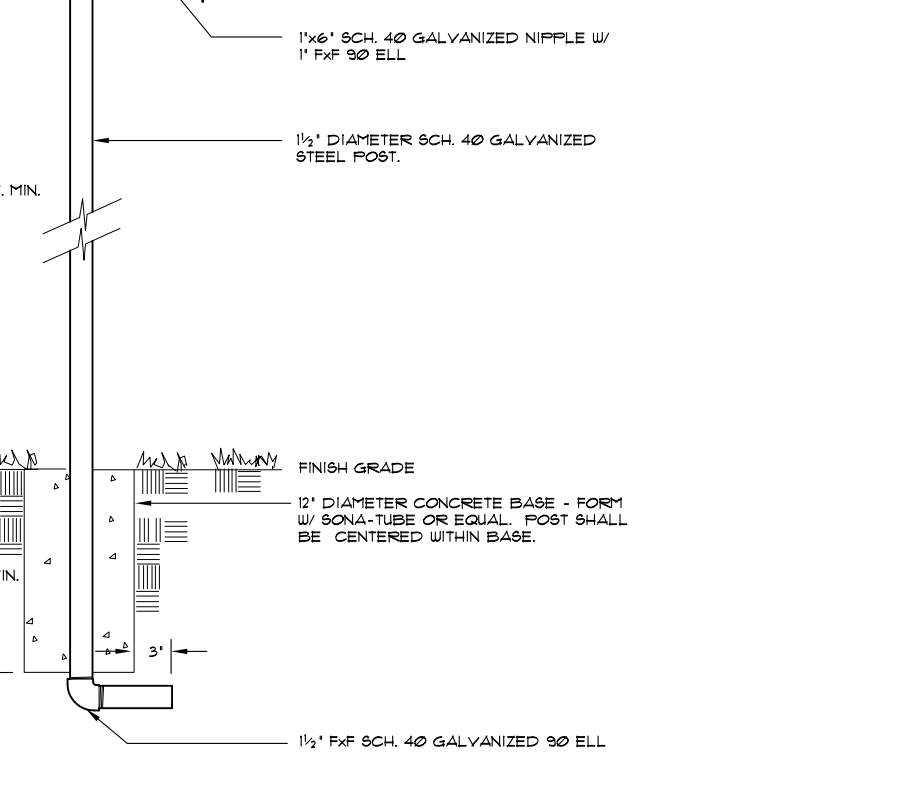
MANUAL ZONE CONTROL (TEMPORARY SYSTEM)

10



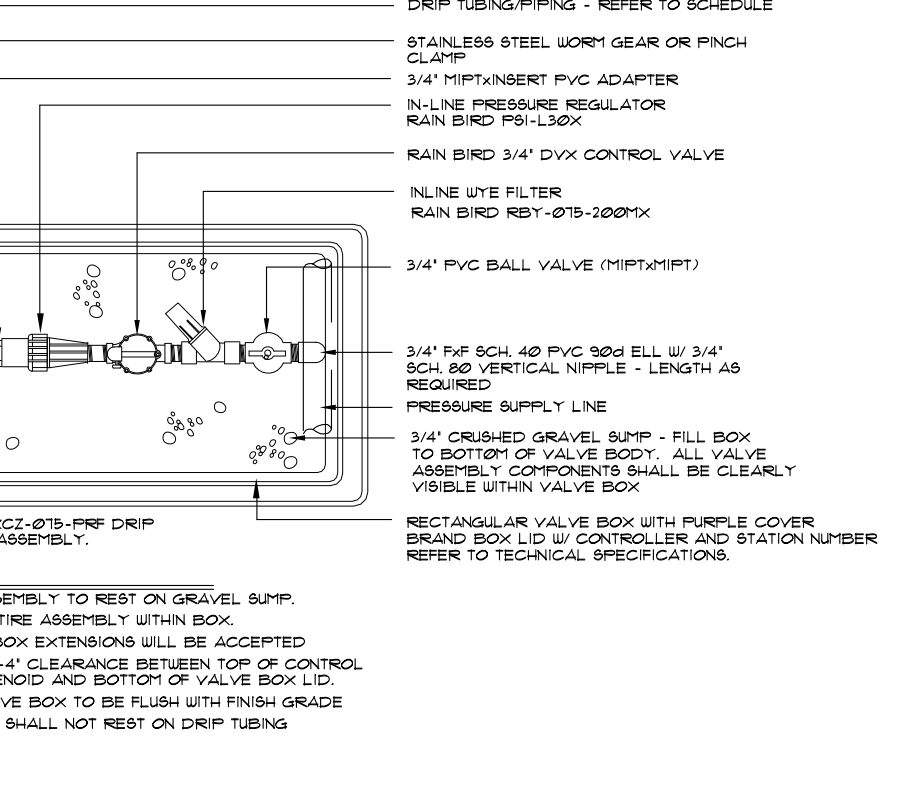
ELECTRIC CONTROLLER

11



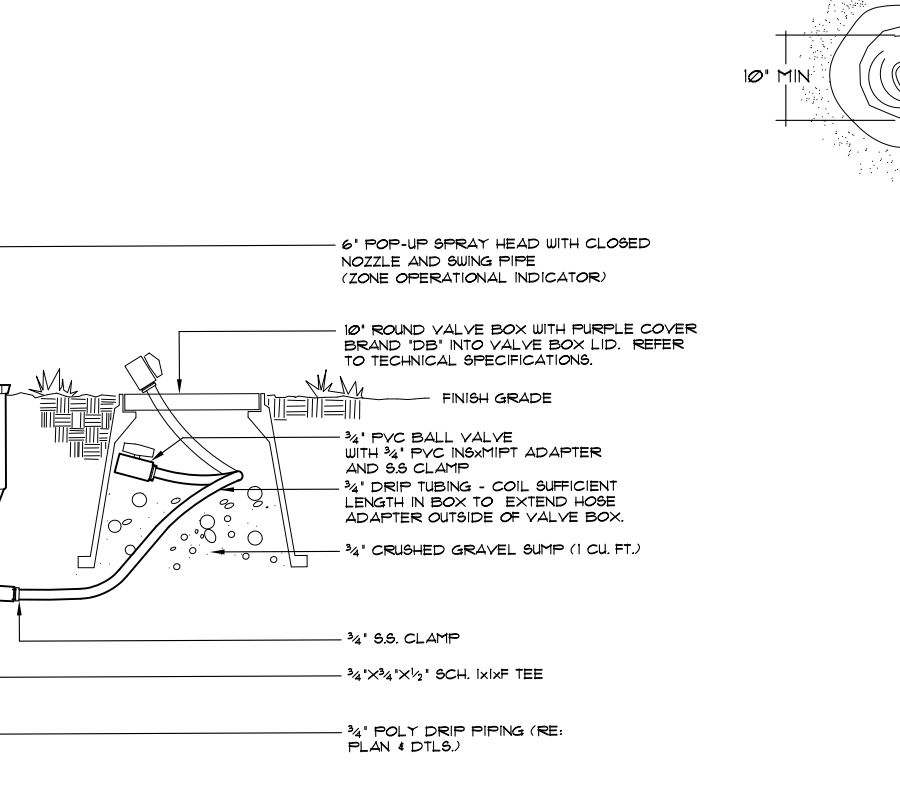
RAIN SENSOR

12



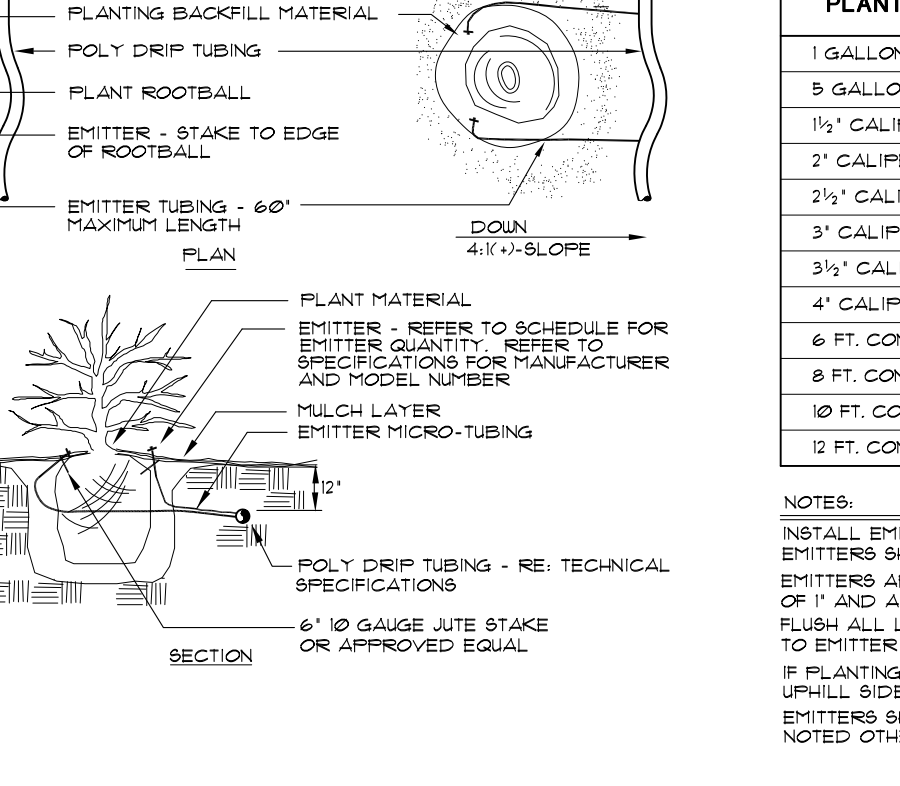
DRIP VALVE ASSEMBLY

13



DRIP TUBE FLUSH-OUT AND OPERATIONAL INDICATOR

14



DRIP EMITTER

15

PLANT SIZE	EMITTER FLOW RATE	EMITTER QTY. AT MULCHED BED LOCATIONS	EMITTER QTY. AT NATIVE SEED LOCATIONS
1 GALLON MATERIAL	0.5 GPH	ONE EACH	ONE EACH
5 GALLON MATERIAL	0.5 GPH	TWO EACH	TWO EACH
1 1/2" CALIPER TREE	1.0 GPH	THREE EACH	FOUR EACH
2" CALIPER TREE	1.0 GPH	FOUR EACH	SIX EACH
2 1/2" CALIPER TREE	1.0 GPH	SIX EACH	EIGHT EACH
3" CALIPER TREE	1.0 GPH	EIGHT EACH	TEN EACH
3 1/2" CALIPER TREE	1.0 GPH	NINE EACH	ELEVEN EACH
4" CALIPER TREE	1.0 GPH	TEN EACH	TWELVE EACH
6 FT. CONIFEROUS TREE	1.0 GPH	FOUR EACH	SIX EACH
8 FT. CONIFEROUS TREE	1.0 GPH	SIX EACH	NINE EACH
10 FT. CONIFEROUS TREE	1.0 GPH	EIGHT EACH	TWELVE EACH
12 FT. CONIFEROUS TREE	1.0 GPH	TEN EACH	FOURTEEN EACH

NOTES:
INSTALL EMITTERS ON OPPOSING SIDES OF ROOTBALL. THREE OR MORE EMITTERS SHALL BE EQUALLY SPACED AROUND ROOT BALL.
EMITTERS ARE TO BE INSTALLED TO CLEAR SURFACE BY A MINIMUM OF 1" AND A MAXIMUM OF 2".
FLUSH ALL LINES THOROUGHLY, INCLUDING EMITTER MICRO-TUBING PRIOR TO EMITTER INSTALLATION.
IF PLANTING ON A 4:1 SLOPE OR STEEPER, INSTALL BOTH EMITTERS ON UP-HILL SIDE OF ROOT BALL.
EMITTERS SHALL BE SELF-FLUSHING, PRESSURE COMPENSATING-TYPE UNLESS NOTED OTHERWISE WITHIN TECHNICAL SPECIFICATIONS.

TOWNHOUSES
CASTLE VALLEY RANCH
181, 185, 189 Redstone Drive
NEW CASTLE, COLORADO

REVISIONS
08-02-18

JOB NUMBER
1809
DATE
11-07-18
DRAWN BY
CHECKED BY

SHEET NUMBER

A1.2

DOOR SCHEDULE

U-FACTOR FOR ALL EXTERIOR DOORS = .35

UNIT	MARK	OPER.	WIDTH	HEIGHT	REMARKS
UNIT A					
A01	HINGE	3'-0"	8'-0"		SOLID CORE, AIR INFILTRATION=.5CFM/SF
A02	HINGE	2'-6"	8'-0"		
A03	HINGE	2'-4"	8'-0"		
A04	BIPASS	4'-8"	8'-0"		(2) 2'-4" WIDE PANELS
A05	BIPASS	6'-0"	8'-0"		(2) 3'-0" WIDE PANELS
A06	HINGE	5'-0"	8'-0"		(2) 2'-6" WIDE PANELS
A07	HINGE	2'-4"	8'-0"		
A08	HINGE	2'-8"	8'-0"		1-3/8" THICK S.C. W/ CLOSER, AIR INFILTRATION=.5CFM
A09	HINGE	2'-6"	8'-0"		
A10	HINGE	2'-4"	8'-0"		
A11	HINGE	3'-0"	8'-0"		1-3/8" THICK S.C. FULL LITE, AIR INFILTRATION=.5CFM
A12	OHD	8'-0"	8'-0"		SECTIONAL OHD - SEE ELEVATIONS
UNIT B					
B01	HINGE	3'-0"	8'-0"		SOLID CORE, AIR INFILTRATION=.5CFM
B02	OHD	8'-0"	8'-0"		SECTIONAL OHD - SEE ELEVATIONS
B03	HINGE	2'-4"	8'-0"		
B04	HINGE	2'-8"	8'-0"		1-3/8" THICK S.C. W/CLOSER, AIR INFILTRATION=.5CFM
B05	HINGE	2'-4"	8'-0"		
B06	BIPASS	5'-0"	8'-0"		(2) 2'-6" WIDE PANELS
B07	HINGE	1'-6"	8'-0"		
B08	SGD	6'-0"	8'-0"		AIR INFILTRATION=.3CFM
B21	HINGE	2'-6"	6'-8"		
B22	BIPASS	5'-0"	6'-8"		(2) 2'-6" WIDE PANELS
B23	HINGE	2'-0"	6'-8"		
B24	HINGE	2'-4"	6'-8"		
B25	HINGE	2'-6"	6'-8"		
B26	HINGE	2'-6"	6'-8"		
B27	BIPASS	5'-0"	6'-8"		(2) 2'-6" WIDE PANELS
B28	HINGE	2'-4"	6'-8"		
B29	HINGE	2'-4"	6'-8"		
UNIT C					
C01	HINGE	3'-0"	8'-0"		SOLID CORE, AIR INFILTRATION=.5CFM/SF
C02	HINGE	2'-6"	8'-0"		
C03	HINGE	2'-4"	8'-0"		
C04	BIPASS	4'-8"	8'-0"		(2) 2'-4" WIDE PANELS
C05	BIPASS	6'-0"	8'-0"		(2) 3'-0" WIDE PANELS
C06	HINGE	5'-0"	8'-0"		(2) 2'-6" WIDE PANELS
C07	HINGE	2'-4"	8'-0"		
C08	HINGE	2'-8"	8'-0"		1-3/8" THICK S.C. W/CLOSER, AIR INFILTRATION=.5CFM
C09	HINGE	2'-6"	8'-0"		
C10	HINGE	2'-4"	8'-0"		
C11	HINGE	3'-0"	8'-0"		1-3/8" THICK S.C. FULL LITE, AIR INFILTRATION=.5CFM
C12	OHD	8'-0"	8'-0"		SECTIONAL OHD - SEE ELEVATIONS
C21	HINGE	2'-6"	6'-8"		
C22	HINGE	2'-4"	6'-8"		
C23	HINGE	2'-4"	6'-8"		
C24	HINGE	2'-4"	6'-8"		
C25	HINGE	2'-6"	6'-8"		
C26	HINGE	2'-6"	6'-8"		
C27	HINGE	2'-4"	6'-8"		

WINDOW SCHEDULE

(SEE ELEVATIONS FOR LOCATIONS OF TEMPERED GLASS)

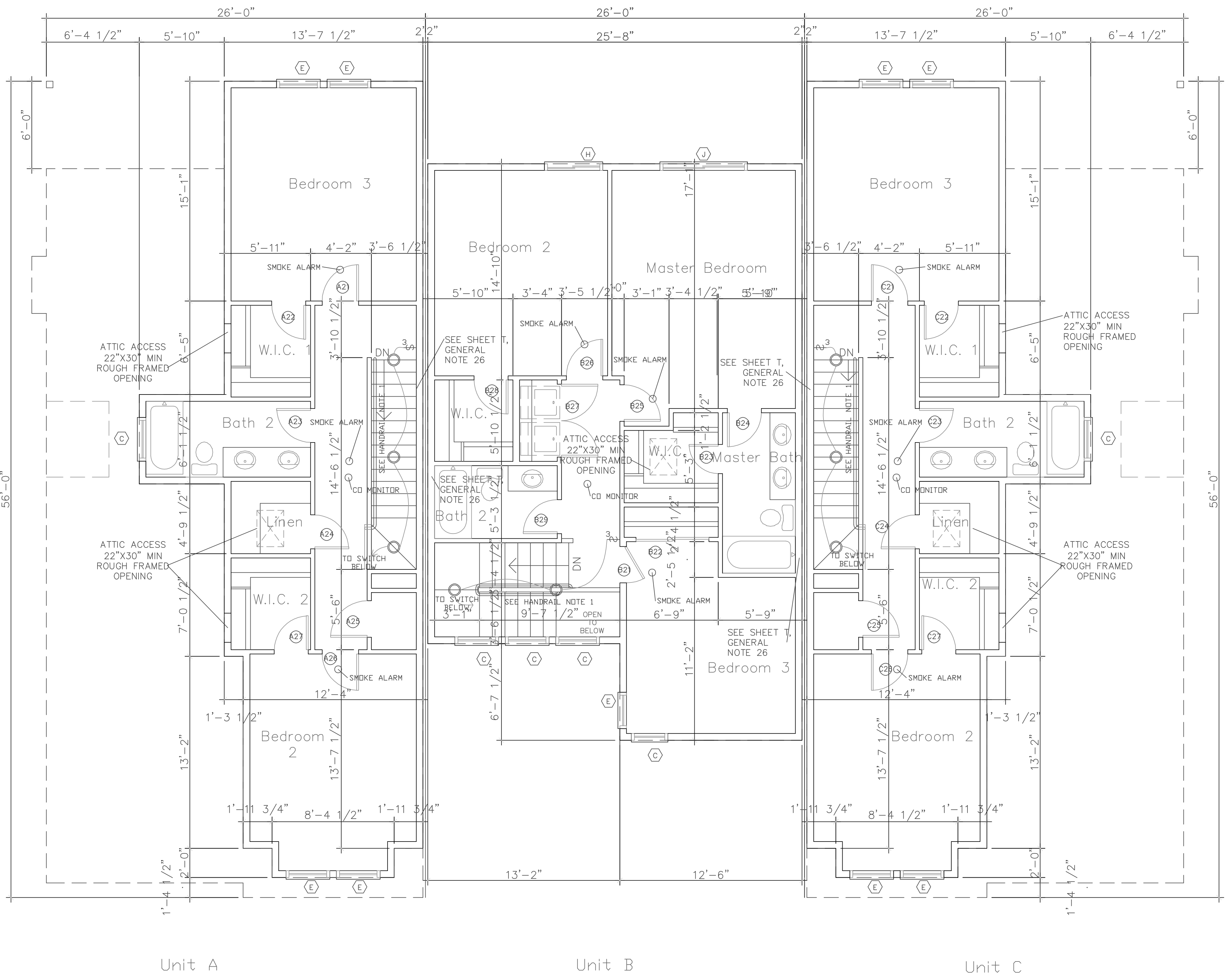
U-FACTOR FOR ALL WINDOWS = .35

AIR INFILTRATION FOR ALL WINDOWS = .3 CFM/SF

MARK	OPER.	WIDTH	HEIGHT	REMARKS
A	SINGLE HUNG	3'-0"	6'-0"	SEE NOTE 1
B	SINGLE HUNG	2'-0"	5'-0"	
C	FIXED	3'-0"	3'-0"	
D	NOT USED			
E	SINGLE HUNG	3'-0"	5'-0"	SEE NOTE 1
F	NOT USED			
G	NOT USED			
H	HORIZ SLIDER	4'-0"	4'-0"	SEE NOTE 1
J	HORIZ SLIDER	4'-0"	6'-0"	SEE NOTE 1

NOTES:

- 1. EMERGENCY ESCAPE AND RESCUE OPENING MEETING THE REQUIREMENTS OF IRC SECTION R310: CLEAR AREA OF 5.7 SF MIN CLEAR WIDTH OF 20' MIN CLEAR HEIGHT 24' MIN SILL NOT MORE THAN 44" ABOVE FLOOR



HANDRAIL NOTE:
1. PROVIDE 1 1/2" DIA. HARDWOOD HANDRAIL ON ONE SIDE OF EACH RUN OF TREADS. HANDRAIL TO BE 36" ABOVE THE NOSING OF EACH TREAD AND RUN CONTINUOUSLY FROM A POINT DIRECTLY ABOVE, THE BOTTOM RISER AND EXTEND TO A POINT DIRECTLY ABOVE THE UPPER RISER. RETURN ENDS OF HANDRAIL TO WALL. MOUNT HANDRAIL USING STANDARD METAL HANDRAIL BRACKETS OF A PROFILE TO PROVIDE A CLEAR SPACE OF NOT LESS THAN 1 1/2" BETWEEN WALL AND EDGE OF HANDRAIL.

SECOND FLOOR PLAN
1/4" = 1'-0"

TOWNHOUSES
CASTLE VALLEY RANCH
181, 185, 189 Redstone Drive
NEW CASTLE, COLORADO



* DENOTES LOCATION
OF TEMPERED
GLASS

STUCCO COLOR 1
STUCCO COLOR 2

FRONT ELEVATION
1/4" = 1'-0"



REAR ELEVATION
1/4" = 1'-0"

REVISIONS

JOB NUMBER
1809
DATE
11-07-18
DRAWN BY
CHECKED BY

SHEET NUMBER

A2.1

GA,I

GARNER ASSOCIATES,
INCORPORATED
ARCHITECTURE AND PLANNING

Harry Garner
Registered Architect

202 East Third Street
Rifle, CO 81650
970/665-9295

E-mail: garner_harry@msn.com

TOWNHOUSES
CASTLE VALLEY RANCH
181, 185, 189 Redstone Drive
NEW CASTLE, COLORADO



LEFT SIDE ELEVATION
 $1/4" = 1'-0"$



RIGHT SIDE ELEVATION
 $1/4" = 1'-0"$

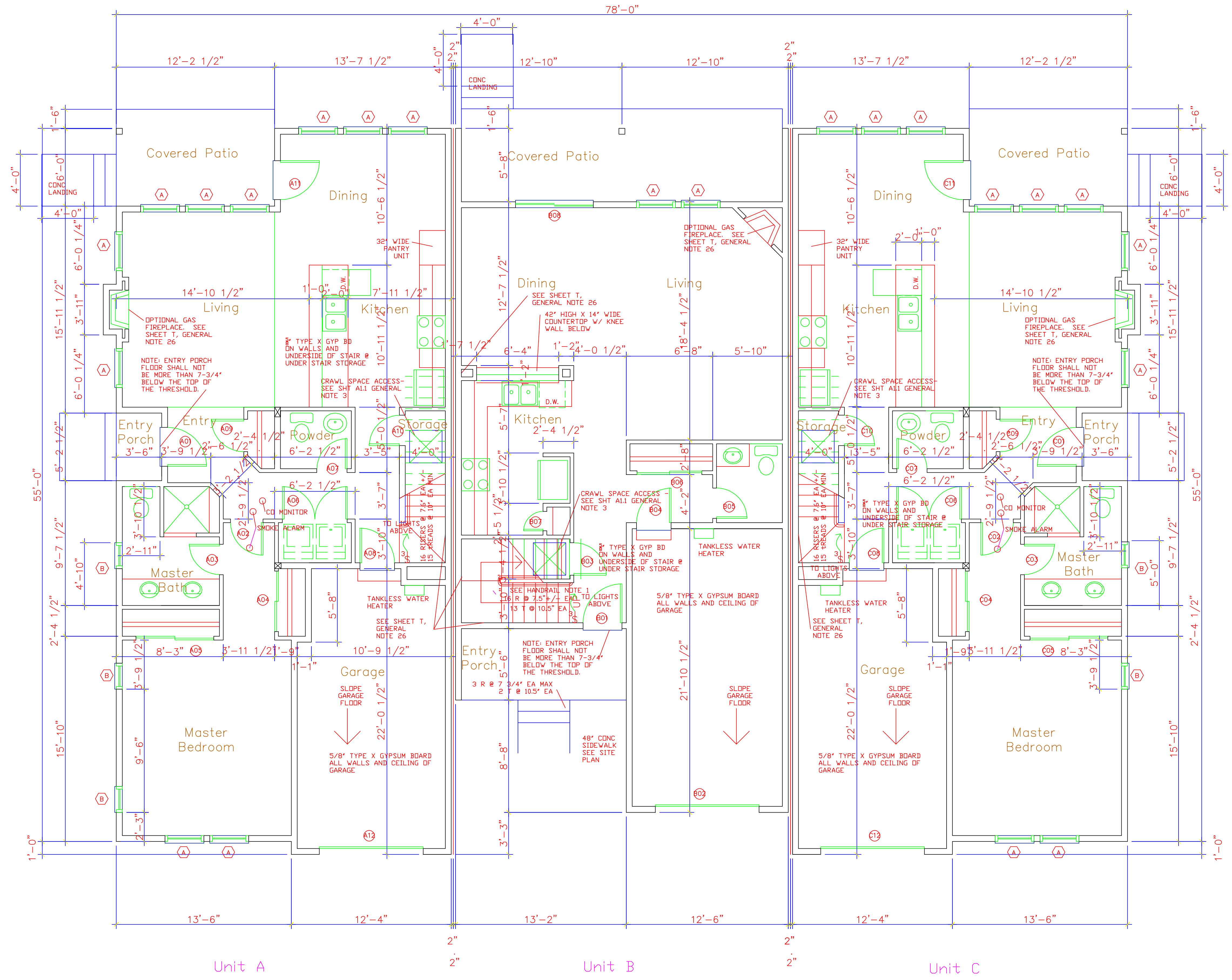
REVISIONS

JOB NUMBER
1809
DATE
11-07-18
DRAWN BY
CHECKED BY

SHEET NUMBER

A2.2

TOWNHOUSES
CASTLE VALLEY RANCH
181, 185, 189 Redstone Drive
NEW CASTLE, COLORADO



GENERAL NOTES:
1. PROVIDE 1 1/2" DIA. HARDWOOD HANDRAIL ON ONE SIDE OF EACH RUN OF TREADS. HANDRAIL TO BE 36" ABOVE THE NOSING OF EACH TREAD AND RUN CONTINUOUSLY FROM A POINT DIRECTLY ABOVE THE BOTTOM RISER AND EXTEND TO A POINT DIRECTLY ABOVE THE UPPER RISER. RETURN ENDS OF HANDRAIL TO WALL. MOUNT HANDRAIL USING STANDARD METAL HANDRAIL BRACKETS OF A PROFILE TO PROVIDE A CLEAR SPACE OF NOT LESS THAN 1 1/2" BETWEEN WALL AND EDGE OF HANDRAIL.
2. PROVIDE A 36" HIGH GUARDRAIL AT EXTERIOR PATIOS AND ENTRY PORCHES WHERE THE WALKING SURFACE IS MORE THAN 30" ABOVE THE ADJACENT FINISHED GRADE. THE GUARDRAILS SHALL BE SOLID OR HAVE RAIL SPACES SO THAT A 4" DIAMETER SPHERE CAN NOT PASS THROUGH.
3. THE FAU SHALL BE LOCATED IN THE CRAWL SPACE. THE CRAWL SPACE ACCESS SHALL BE SIZED SO THAT THE LARGEST PIECE OF EQUIPMENT MAY BE REMOVED FROM THE CRAWL SPACE. PROVIDE A SWITCHED LIGHT IN THE CRAWL SPACE NEAR THE FAU.

FIRST FLOOR PLAN
1/4" = 1'-0"

REVISIONS
08-02-18

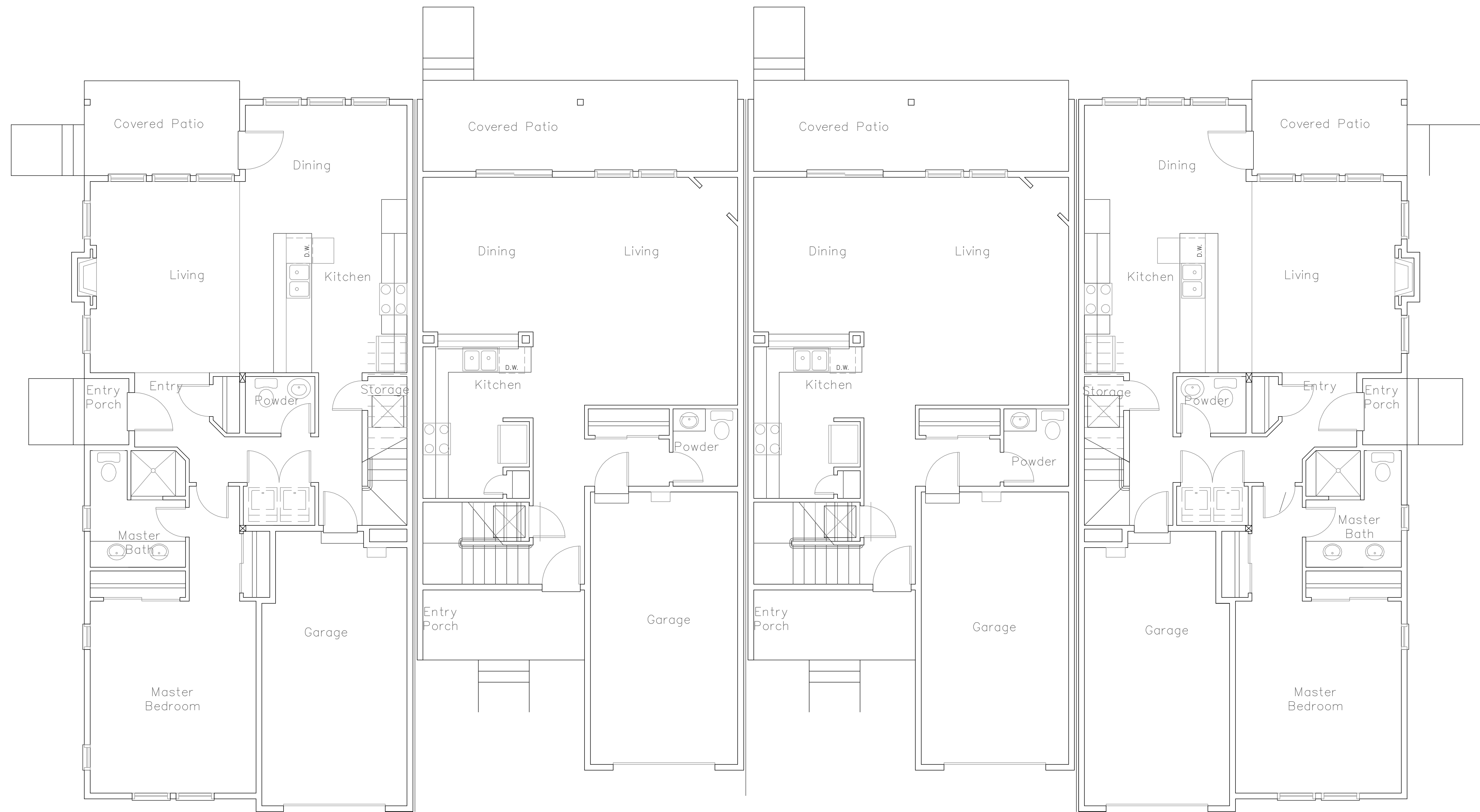
JOB NUMBER
1809
DATE
11-07-18
DRAWN BY

CHECKED BY

SHEET NUMBER

A1.1

**4 UNIT TOWNHOUSES
CASTLE VALLEY RANCH
PA17
NEW CASTLE, COLORADO**



Unit A

Unit B

Unit C

Unit D

FIRST FLOOR PLAN
1/4" = 1'-0"

REVISIONS
08-02-18

JOB NUMBER
2003
DATE
02-24-2020
DRAWN BY
CHECKED BY

SHEET NUMBER

A1.1

**4 UNIT TOWNHOUSES
CASTLE VALLEY RANCH
PA17
NEW CASTLE, COLORADO**



SECOND FLOOR PLAN
1/4" = 1'-0"

REVISIONS
08-02-18

JOB NUMBER
2003
DATE
02-24-2020
DRAWN BY
CHECKED BY

SHEET NUMBER
A1.2

4 UNIT TOWNHOUSES
CASTLE VALLEY RANCH
PA17
NEW CASTLE, COLORADO



FRONT ELEVATION
1/4" = 1'-0"



REAR ELEVATION
1/4" = 1'-0"

REVISIONS

JOB NUMBER
2003
DATE
02-24-2020
DRAWN BY
CHECKED BY

SHEET NUMBER

A2.1

GA,I

GARNER ASSOCIATES,
INCORPORATED
ARCHITECTURE AND PLANNING

Harry Garner
Registered Architect

202 East Third Street
Rifle, CO 81650
970/665-9295

E-mail: garner_harry@msn.com

4 UNIT TOWNHOUSES
CASTLE VALLEY RANCH
PA17
NEW CASTLE, COLORADO



LEFT SIDE ELEVATION
 $1/4" = 1'-0"$



RIGHT SIDE ELEVATION
 $1/4" = 1'-0"$

REVISIONS

JOB NUMBER
2003
DATE
02-24-2020
DRAWN BY
CHECKED BY

SHEET NUMBER

A2.2